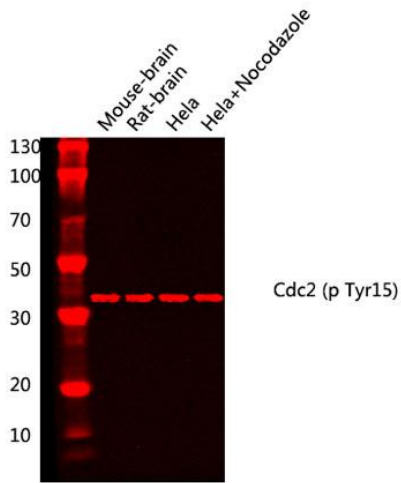
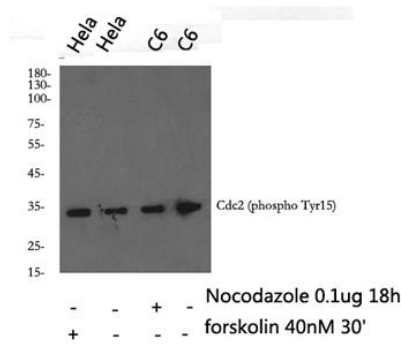


---

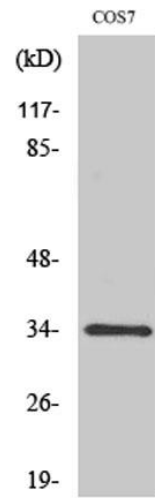
<b>Product name:</b>	Phospho-CDC2 (Tyr15) Rabbit Polyclonal Antibody
<b>Cat number:</b>	ABP10203
<b>Conjugate:</b>	Unconjugated
<b>Size:</b>	100 ug
<b>Clone:</b>	POLY
<b>Concentration:</b>	1mg/ml
<b>Host:</b>	Rabbit
<b>Isotype:</b>	IgG
<b>Immunogen:</b>	The antiserum was produced against synthesized peptide derived from human CDC2 around the phosphorylation site of Tyr15. AA range:5-54
<b>Reactivity:</b>	Human ,Mouse, Rat, Monkey
<b>Applications:</b>	Western Blot: 1/500 - 1/2000
<b>Molecular Weight:</b>	34kDa
<b>Purification:</b>	The antibody was affinity-purified from rabbit antiserum by affinity-chromatography using epitope-specific immunogen.
<b>Form:</b>	Liquid
<b>Buffer:</b>	Liquid in PBS containing 50% glycerol, 0.5% BSA and 0.02% sodium azide.
<b>Storage:</b>	Store at -20°C. Avoid repeated freeze-thaw cycles.
<b>Background:</b>	cyclin dependent kinase 1(CDK1) Homo sapiens The protein encoded by this gene is a member of the Ser/Thr protein kinase family. This protein is a catalytic subunit of the highly conserved protein kinase complex known as M-phase promoting factor (MPF), which is essential for G1/S and G2/M phase transitions of eukaryotic cell cycle. Mitotic cyclins stably associate with this protein and function as regulatory subunits. The kinase activity of this protein is controlled by cyclin accumulation and destruction through the cell cycle. The phosphorylation and dephosphorylation of this protein also play important regulatory roles in cell cycle control. Alternatively spliced transcript variants encoding different isoforms have been found for this gene.



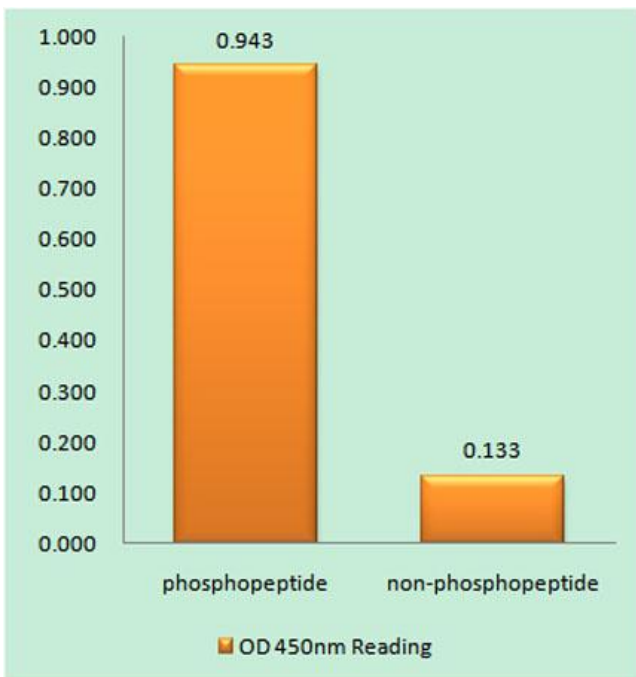
Western blot analysis of lysates from Mouse-brain, Rat-brain, HeLa cells treated with nocodazole 1ug/ml 18h, using CDC2 p-Thr15 Antibody. Primary Antibody was diluted at 1:1000 4° over night, secondary antibody was diluted at 1:10000.



Western blot analysis of Cdc2 (phospho Tyr15) Polyclonal Antibody, using HeLa, C6 cell treated or untreated with forskolin 40nM 30', Nocodazole 0.1ug/ml 18hour, 4° over night, secondary antibody was diluted at 1:10000, 37° 1hour.



Western Blot analysis of various cells using Phospho-Cdc2 (Y15) Polyclonal Antibody



Enzyme-Linked Immunosorbent Assay (Phospho-ELISA) for Immunogen Phosphopeptide (Phospho-left) and Non-Phosphopeptide (Phospho-right), using CDC2 (Phospho-Tyr15) Antibody.