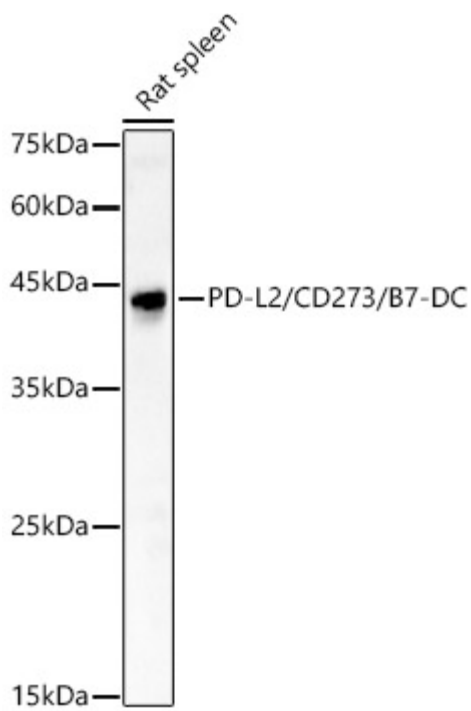

Product name:	PD-L2/CD273/B7-DC Rabbit Polyclonal Antibody
Cat number:	AB-84817
Conjugate:	Unconjugated
Size:	100 ug
Clone:	POLY
Concentration:	1mg/ml
Host:	Rabbit
Isotype:	IgG
Immunogen:	Recombinant protein of mouse PD-L2/CD273/B7-DC.
Reactivity:	Mouse,Rat
Applications:	Western Blot: 1:500 - 1:1000
Molecular Weight:	45-60kDa
Purification:	Affinity Purified
Form:	Liquid
Buffer:	PBS with 0.05% proclin300,50% glycerol,pH7.3.
Storage:	Store at -20°C. Avoid freeze / thaw cycles.
Background:	Acts upstream of or within negative regulation of T cell proliferation and positive regulation of T cell proliferation. Predicted to be located in plasma membrane. Predicted to be integral component of membrane. Predicted to be active in external side of plasma membrane. Is expressed in several structures, including alimentary system epithelium; forebrain; nose; retina; and skin. Orthologous to human PDCD1LG2 (programmed cell death 1 ligand 2).



Western blot analysis of Rat spleen, using PD-L2/CD273/B7-DC antibody at 1:600 dilution.

Secondary antibody: HRP Goat Anti-Rabbit IgG (H+L) at 1:10000 dilution. Lysates/proteins: 25µg per lane. Blocking buffer: 3% nonfat dry milk in TBST. Detection: ECL West Pico Plus. Exposure time: 60s.