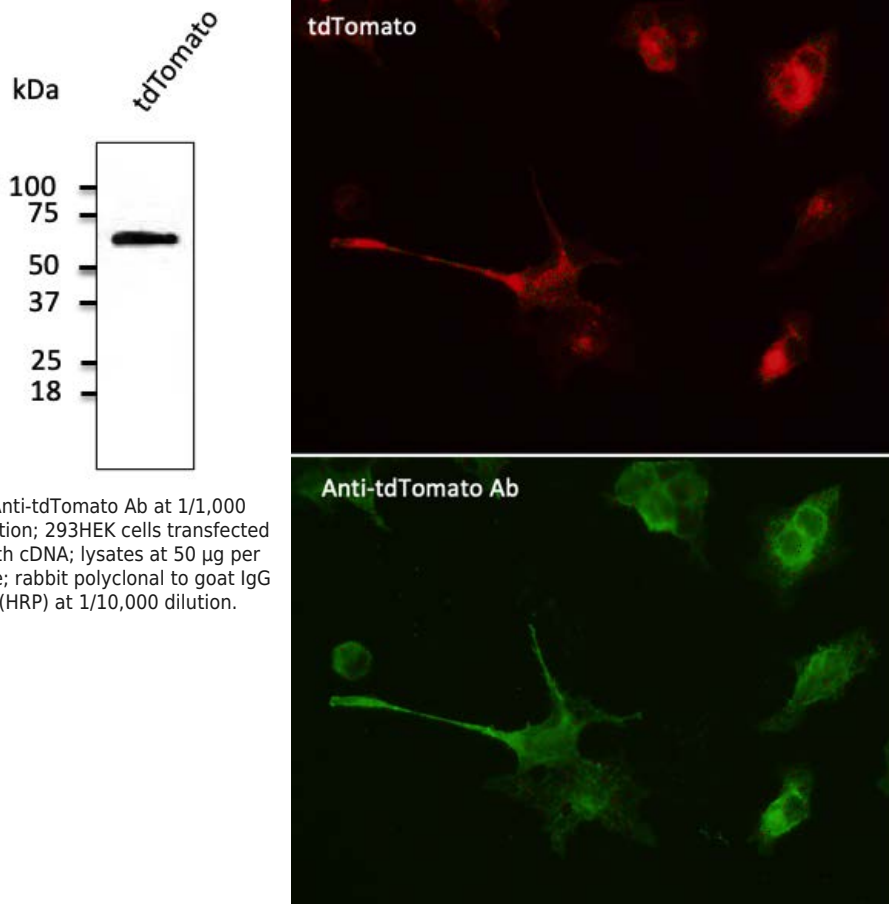


Product name:	Anti-tdTomato Goat Polyclonal Antibody
Cat number:	AB-84822
Conjugate:	Unconjugated
Size:	600 ug
Clone:	POLY
Concentration:	3.00 mg/ml
Host:	Goat
Isotype:	IgG
Immunogen:	Purified recombinant peptide produced in E. coli.
Reactivity:	Transfected Cells
Applications:	Western Blot: 1:500-1:2,000 Immunohistochemistry (frozen tissues): :1:50-1:500 Immunohistochemistry (paraffin-embedded tissues): :1:50-1:500 Immunofluorescence: :1:50-1:500
Buffer:	Polyclonal antibody supplied as a 200 µl (3 mg/ml) aliquot in PBS, 20% glycerol and 0.05% sodium azide. This antibody is epitope-affinity purified from goat antiserum.
Storage:	For continuous use, store at 2-8 C for one-two days. For extended storage, store in -20 C freezer. Working dilution samples should be discarded if not used within 12 hours.
Background:	Goat polyclonal antibody to tdTomato (red fluorescent protein). tdTomato protein is derived from DsRed, an engineered red fluorescent protein from so-called disc corals of the genus <i>Discosoma</i> . It is a genetic fusion of two copies of the dTomato gene, which has been specifically designed for low aggregation. It's brightness and emission wavelength, makes it ideal for live animal research. <dl class="mb-10"> <dt class="text-sm leading-5 font-medium text-gray-500"></dt> </dl>



Anti-tdTomato Ab at 1/1,000 dilution; 293HEK cells transfected with cDNA; lysates at 50 µg per lane; rabbit polyclonal to goat IgG (HRP) at 1/10,000 dilution.

Immunofluorescence - anti-tdTomato Ab in 293HEK cells transfected with cDNA at 1/50 dilution; cells were fixed with 4% of PFA.