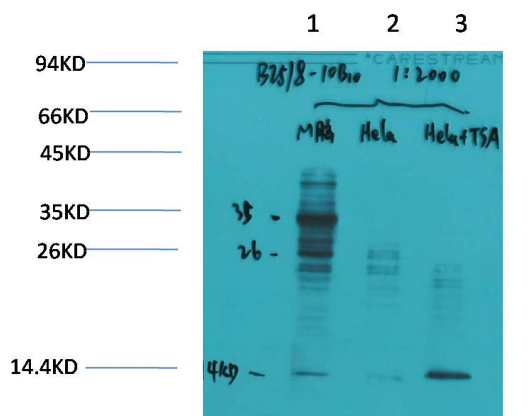
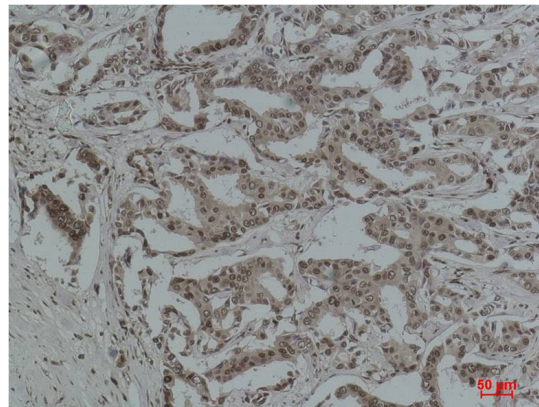


<b>Product name:</b>	Acetyl Lysine Mouse Monoclonal Antibody
<b>Cat number:</b>	MABE1191
<b>Conjugate:</b>	unconjugated
<b>Size:</b>	100 ug
<b>Clone:</b>	Monoclonal
<b>Concentration:</b>	1mg/mL
<b>Host:</b>	Mouse
<b>Isotype:</b>	IgG1
<b>Immunogen:</b>	Purified Protein
<b>Reactivity:</b>	ALL
<b>Applications:</b>	WB 1:1,000-2,000 IHC 1:200-500
<b>Purification:</b>	Affinity purification
<b>Form:</b>	liquid
<b>Buffer:</b>	PBS with 0.02% sodium azide and 50% glycerol pH 7.4
<b>Storage:</b>	Store at -20°C. Avoid repeated freeze-thaw cycles.

**Background:** Acetylation of lysine, like phosphorylation of serine, threonine or tyrosine, is an important reversible modification controlling protein activity. The role of acetylation in intracellular signaling has been inferred from the binding of acetylated peptides by the conserved bromodomain.



Western blot analysis of 1) Mouse Brain Tissue, 2)HeLa, 3)HeLa+TSA Treated with Acetyl Lysine Mouse mAb diluted at 1:2,000.



Immunohistochemical analysis of paraffin-embedded Human Breast Carcinoma using Acetylated Lysine Mouse mAb diluted at 1:500.