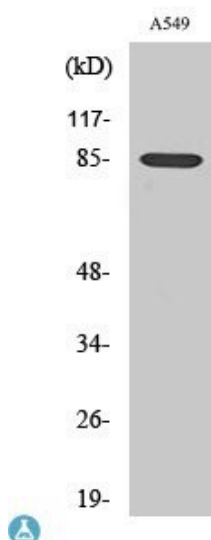


<b>Product name:</b>	ADAM10
<b>Cat number:</b>	AB-84196
<b>Conjugate:</b>	Unconjugated
<b>Size:</b>	100µg
<b>Clone:</b>	POLY
<b>Concentration:</b>	1mg/ml
<b>Host:</b>	Rb
<b>Isotype:</b>	IgG
<b>Immunogen:</b>	Synthesized peptide derived from human ADAM10.
<b>Reactivity:</b>	Hu
<b>Applications:</b>	Western Blot: 1:500-1:2000 ELISA: 1:20000
<b>Molecular Weight:</b>	85kDa
<b>Purification:</b>	The antibody was affinity-purified from rabbit antiserum by affinitychromatography using epitope-specific immunogen.
<b>Form:</b>	Liquid
<b>Buffer:</b>	Liquid in PBS containing 50% glycerol, 0.5% BSA and 0.02% sodium azide.
<b>Storage:</b>	Store at -20°. Avoid freeze / thaw cycles.
<b>Background:</b>	Specificity: ADAM10 Polyclonal Antibody detects endogenous levels of ADAM10 protein.Tissue Specificity: Expressed in spleen, lymph node, thymus, peripheral blood leukocyte, bone marrow, cartilage, chondrocytes and fetal liver.



Western Blot (WB) analysis of specific cells using ADAM10 polyclonal antibody.