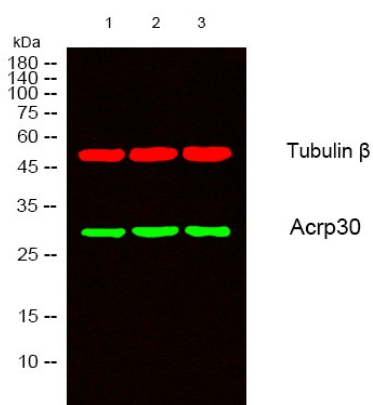
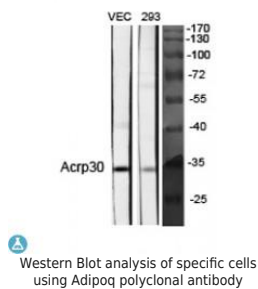


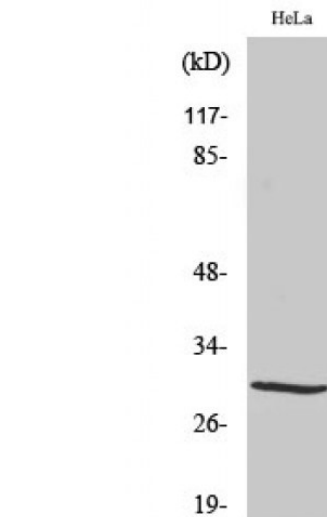
**Product name:** ADIPOQ  
**Cat number:** AB-84172  
**Size:** 100ug  
**Clone:** POLY  
**Concentration:** 1mg/ml  
**Host:** Rb  
**Isotype:** IgG  
**Immunogen:** Synthesized peptide derived from human Acrp30.  
**Reactivity:** Hu, Ms, Rt  
**Applications:** Western Blot: 1:500-1:2000 ELISA: 1:10000  
**Molecular Weight:** 30kDa  
**Purification:** The antibody was affinity-purified from rabbit antiserum by affinity-chromatography using epitope-specific immunogen.  
**Form:** Liquid  
**Buffer:** Liquid in PBS containing 50% glycerol, 0.5% BSA and 0.02% sodium azide  
**Storage:** Store at -20°. Avoid freeze / thaw cycles.  
**Background:** Specificity: Adipoq Polyclonal Antibody detects endogenous levels of Adipoq protein. Tissue Specificity: Synthesized exclusively by adipocytes and secreted into plasma.



Western blot analysis of lysates from 1) HeLa, 2) VEC, 3) 293 cells. [Green] primary antibody was diluted at 1:1000, 4° overnight, secondary antibody was diluted at 1:10000, 37° 1 hour. [Red] Tubulin β Monoclonal Antibody(5G3) antibody was diluted at 1:5000 as loading control, 4° overnight, secondary antibody was diluted at 1:10000, 37° 1 hour.



Western Blot analysis of specific cells using Adipoq polyclonal antibody



Western Blot (WB) analysis of HeLa cells using Adipoq polyclonal antibody.