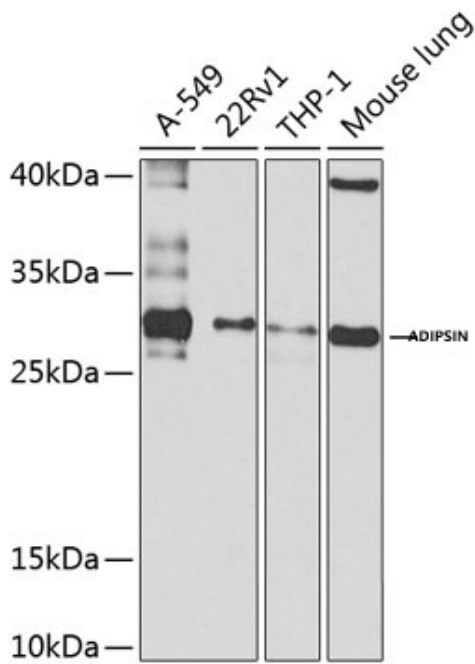


<b>Product name:</b>	Adipsin Rabbit Polyclonal Antibody
<b>Cat number:</b>	AB-84821
<b>Conjugate:</b>	Unconjugated
<b>Size:</b>	100 ug
<b>Clone:</b>	POLY
<b>Concentration:</b>	1mg/ml
<b>Host:</b>	Rabbit
<b>Isotype:</b>	IgG
<b>Immunogen:</b>	Recombinant fusion protein containing a sequence corresponding to amino acids 26-253 of human Adipsin.
<b>Reactivity:</b>	Human,Mouse
<b>Applications:</b>	Western Blot: 1:500 - 1:2000
<b>Molecular Weight:</b>	27kDa
<b>Purification:</b>	Affinity Purified
<b>Form:</b>	Liquid
<b>Buffer:</b>	PBS with 0.02% sodium azide,50% glycerol,pH7.3.
<b>Storage:</b>	Store at -20°C. Avoid freeze / thaw cycles.
<b>Background:</b>	<p>This gene encodes a member of the S1, or chymotrypsin, family of serine peptidases. This protease catalyzes the cleavage of factor B, the rate-limiting step of the alternative pathway of complement activation. This protein also functions as an adipokine, a cell signaling protein secreted by adipocytes, which regulates insulin secretion in mice. Mutations in this gene underlie complement factor D deficiency, which is associated with recurrent bacterial meningitis infections in human patients. Alternative splicing of this gene results in multiple transcript variants. At least one of these variants encodes a preproprotein that is proteolytically processed to generate the mature protease.</p>



Western blot analysis of extracts of various cell lines, using Adipsin antibody at 1:1000 dilution. Secondary antibody: HRP Goat Anti-Rabbit IgG (H+L) at 1:10000 dilution. Lysates/proteins: 25µg per lane. Blocking buffer: 3% nonfat dry milk in TBST. Detection: ECL West Pico Plus. Exposure time: 20s.