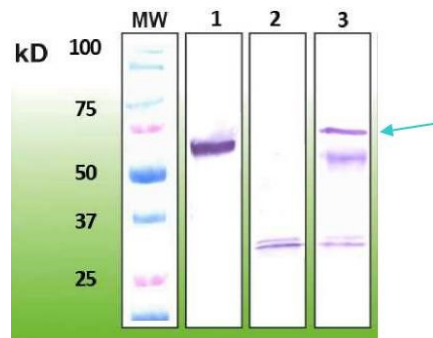
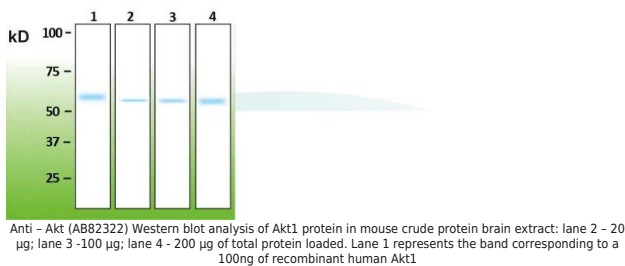


|                       |   |
|-----------------------|---|
| <b>Product name:</b>  | AKT1  |
| <b>Cat number:</b>    | AB-82322  |
| <b>Size:</b>          | 100 ul  |
| <b>Clone:</b>         | Poly  |
| <b>Concentration:</b> | 1mg/ml  |
| <b>Host:</b>          | Rb  |
| <b>Isotype:</b>       | IgG   |
| <b>Immunogen:</b>     | Peptide derived from the C-terminal sequence of human AKT1 protein  |
| <b>Reactivity:</b>    | Hu, Ms, Rt  |
| <b>Applications:</b>  | Western blotting -1:1,000 - ELISA - 1:100,000 - 1:200,000   |
| <b>Purification:</b>  | Purified  |
| <b>Form:</b>          | Liquid  |
| <b>Buffer:</b>        | 20 mM Tris-HCl, pH 8.0  |
| <b>Storage:</b>       | 10 µl aliquots at -20 °C.   |
| <b>Background:</b>    | Major clone of IgG obtained from the crude rabbit antiserum by in vitro cloning technology, detecting the Akt1 protein. This antibody cross-reacts with the Akt2 and Akt3 proteins at the lower signal intensity. |



Immunoprecipitation-western blot analysis of Akt1 from mouse brain tissue  
1. Recombinant Akt1 (50ng; positive control). 2. 200 µg of mouse brain protein extract, immunoprecipitation protocol followed without the primary antibody (negative control). Akt1 kinase immunoprecipitation from 200 µg of mouse brain protein extract with Akt1 antibody