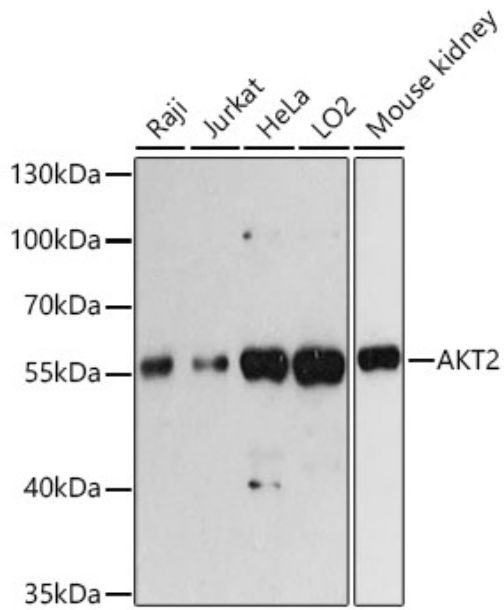

Product name:	AKT2 Rabbit Polyclonal Antibody
Cat number:	AB-83368
Conjugate:	Unconjugated
Size:	100 ug
Clone:	POLY
Concentration:	1mg/ml
Host:	Rb
Isotype:	IgG
Immunogen:	A synthetic peptide corresponding to a sequence within amino acids 400 to the Cterminus of human AKT2
Reactivity:	Human, Mouse, Rat, Monkey
Applications:	Western Blot: 1:1000 - 1:5000 Immunohistochemistry: 1:50 - 1:100 Immunofluorescence: 1:50 - 1:100 Immunocytochemistry: 1:50 - 1:100 Immunoprecipitation: 1:20 - 1:50 ChIP: 1:20 - 1:100
Molecular Weight:	60kDa
Purification:	Aff. Pur.
Form:	Liquid
Buffer:	PBS with 0.01% thiomersal,50% glycerol,pH7.3.
Storage:	Store at -20°C. Avoid freeze / thaw cycles.
Background:	This gene is a putative oncogene encoding a protein belonging to a subfamily of serine/threonine kinases containing SH2-like (Src homology 2-like) domains. The gene was shown to be amplified and overexpressed in 2 of 8 ovarian carcinoma cell lines and 2 of 15 primary ovarian tumors. Overexpression contributes to the malignant phenotype of a subset of human ductal pancreatic cancers. The encoded protein is a general protein kinase capable of phosphorylating several known proteins.



Western blot analysis of extracts of various cell lines, using AKT2 antibody) at 1:3000 dilution. Secondary antibody: HRP Goat Anti-Rabbit IgG (H+L) at 1:10000 dilution. Lysates/proteins: 25ug per lane. Blocking buffer: 3% nonfat dry milk in TBST. Detection: ECL West Pico Plus. Exposure time: 60s.