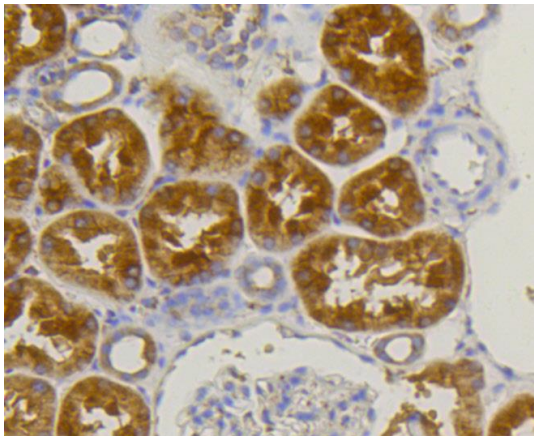
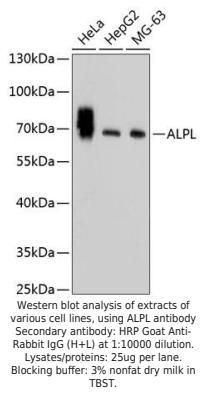
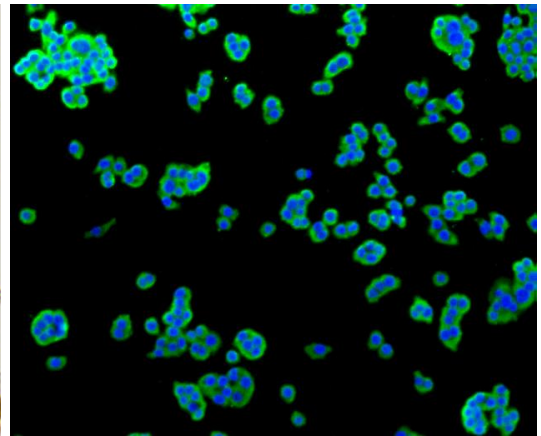
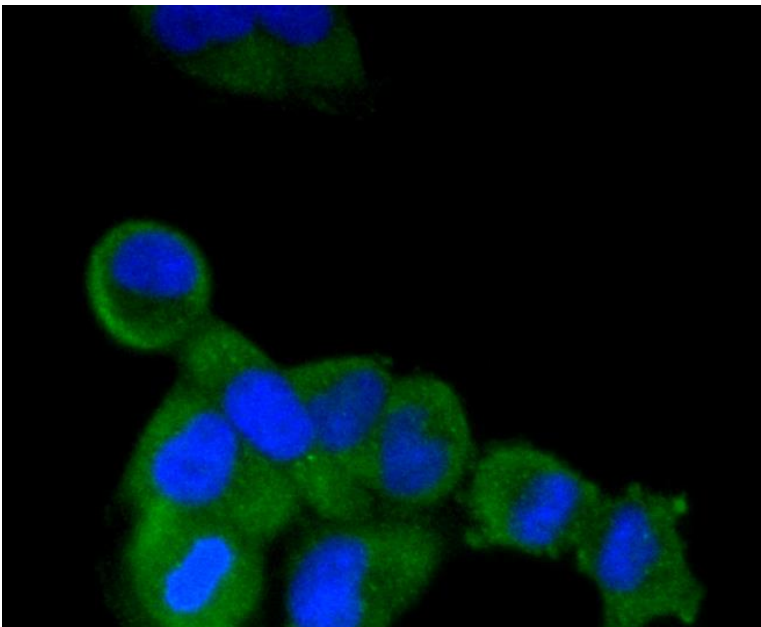

Product name:	Alkaline Phosphatase
Cat number:	AB-84118
Size:	100 ug
Clone:	POLY
Concentration:	1mg/ml
Host:	Rb
Isotype:	IgG
Immunogen:	Recombinant protein of human ALPL
Reactivity:	Hu, Ms, Rt
Applications:	Western Blot: 1:2500 -1:5000 Immunohistochemistry: 1:50 -1:200 Immunofluorescence: 1:50 - 1:100 Immunoprecipitation: 1:20 - 1:50
Molecular Weight:	70kDa
Purification:	Aff. Pur.
Form:	Liquid
Buffer:	PBS with 0.02% sodium azide, 50% glycerol, pH7.3.
Storage:	Store at -20°C. Avoid freeze / thaw cycles.
Background:	<p>This gene encodes a member of the alkaline phosphatase family of proteins. There are at least four distinct but related alkaline phosphatases: intestinal, placental, placental-like, and liver/bone/kidney (tissue non-specific). The first three are located together on chromosome 2, while the tissue non-specific form is located on chromosome 1. The product of this gene is a membrane bound glycosylated enzyme that is not expressed in any particular tissue and is, therefore, referred to as the tissue-nonspecific form of the enzyme. Alternative splicing results in multiple transcript variants, at least one of which encodes a preprotein that is proteolytically processed to generate the mature enzyme. This enzyme may play a role in bone mineralization. Mutations in this gene have been linked to hypophosphatasia, a disorder that is characterized by hypercalcemia and skeletal defects.</p>



Immunohistochemistry of paraffin-embedded human kidney using ALPL antibody at dilution of 1:100 (40x lens).



Immunofluorescence analysis of SW480 cells using ALPL antibody.



Immunofluorescence analysis of HeLa cells using ALPL antibody.