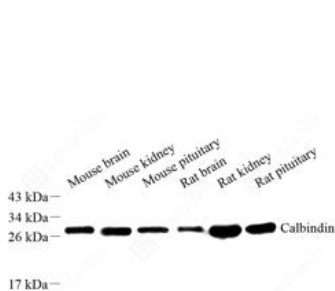
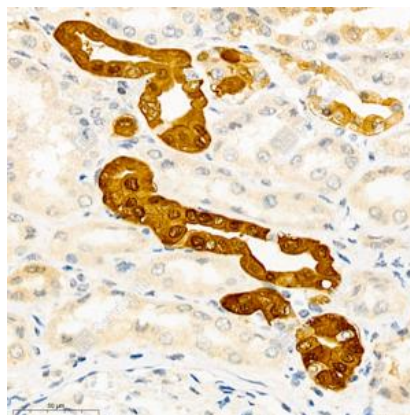


Product name: Anti-Calbindin Rabbit Monoclonal Antibody
Cat number: MAB-94138
Conjugate: unconjugated
Size: 100 µL
Clone: 4H7
Concentration: 1mg/ml
Host: Rabbit
Isotype: IgG
Immunogen: Recombinant protein corresponding to Mouse Calbindin
Reactivity: Species, Mouse, Rat, Human, Mouse, Rat
Applications: Applications Dilution
WB 1: 500-1: 1000
IHC/IF 1: 1000-1: 3000
Purification: Affinity purification
Form: Liquid
Buffer: PBS with 0.15% ProClin300, 100 µg/mL BSA and 50% glycerol.
Storage: Store at -20°C for one year. Avoid repeated freeze/thaw cycles.

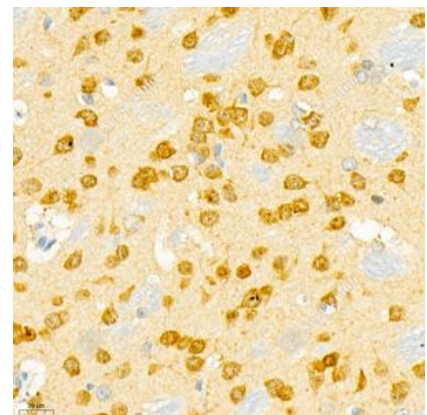
Background: Calbindin 1 is a protein that in humans is encoded by the CALB1 gene. The protein encoded by this gene is a member of the calcium-binding protein superfamily that includes calmodulin and troponin C. Originally described as a 27 kDa protein, it is now known to be a 28 kDa protein. It contains four active calcium-binding domains, and has two modified domains that are thought to have lost their calcium binding capability. This protein is thought to buffer entry of calcium upon stimulation of glutamate receptors. Depletion of this protein was noted in patients with Huntington disease.



WB analysis of Calbindin. Sample: Protein treated by RIPA Lysis Buffer. Blocking buffer: 3% Nonfat dry milk in TBST, RT, 1h. Primary antibody: 1: 500, 4°C overnight. Secondary antibody: HRP conjugated Goat Anti-Rabbit IgG, 1: 5000, RT, 1h.



IHC analysis of Calbindin. Sample: Human renal cancer, 4% PFA 12-24h. Antigen retrieval: Citrate buffer, 98°C, 20 min. Primary antibody: 1: 1000, 4°C overnight. Secondary antibody: HRP conjugated Goat Anti-Rabbit IgG, 1: 200, RT, 1h.



IHC analysis of Calbindin. Sample: Mouse brain, 4% PFA 12-24h. Antigen retrieval: Citrate buffer, 98°C, 20 min. Primary antibody: 1: 1000, 4°C overnight. Secondary antibody: HRP conjugated Goat Anti-Rabbit IgG, 1: 200, RT, 1h.