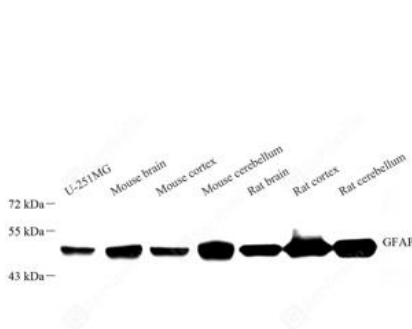
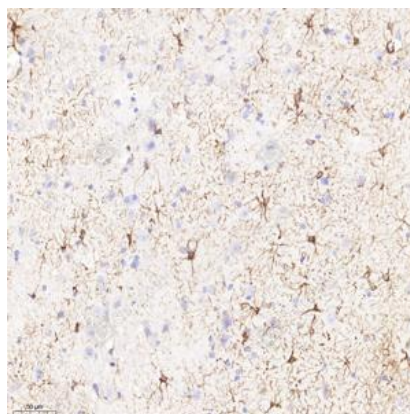


**Product name:** Anti-GFAP Rabbit Polyclonal Antibody  
**Cat number:** ABS11096  
**Conjugate:** unconjugated  
**Size:** 100 µL  
**Concentration:** 1mg/ml  
**Host:** Rabbit  
**Isotype:** IgG  
**Immunogen:** KLH conjugated Synthetic peptide corresponding to Mouse GFAP  
**Reactivity:** Species, Human, Mouse, Rat, Human, Mouse, Rat, Monkey  
**Applications:** Western Blot: 1: 1000-1: 2000 Immunohistochemistry: 1: 500-1: 3000  
 Immunofluorescence: 1: 500-1: 3000  
**Purification:** Affinity purification  
**Form:** Liquid  
**Buffer:** PBS with 0.15% ProClin300, 100 µg/mL BSA and 50% glycerol.  
**Storage:** Store at -20°C for one year. Avoid repeated freeze/thaw cycles.

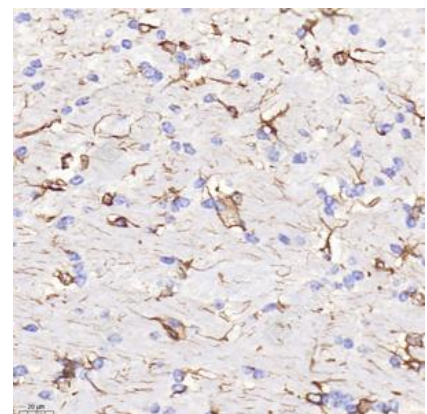
**Background:** Glial fibrillary acidic protein is an intermediate filament (IF) protein that is expressed by numerous cell types of the central nervous system (CNS) including astrocytes and ependymal cells. GFAP has also been found to be expressed in glomeruli and peritubular fibroblasts taken from rat kidneys Leydig cells of the testis in both hamsters and humans, human keratinocytes, human osteocytes and chondrocytes and stellate cells of the pancreas and liver in rats. It is closely related to its non-epithelial family members, vimentin, desmin, and peripherin, which are all involved in the structure and function of the cell's cytoskeleton.



WB analysis of GFAP. Sample: Protein treated by RIPA Lysis Buffer. Blocking buffer: 3% Nonfat dry milk in TBST, RT, 1h. Primary antibody: 1: 1000, 4°C overnight. Secondary antibody: HRP conjugated Goat Anti-Rabbit IgG, 1: 5000, RT, 1h.



IHC analysis of GFAP. Sample: Rat brain, 4% PFA 12-24h. Antigen retrieval: Citrate buffer, 98°C, 20 min. Primary antibody: 1: 3000, 4°C overnight. Secondary antibody: HRP conjugated Goat Anti-Rabbit IgG, 1: 200, RT, 1h.



IHC analysis of GFAP. Sample: Mouse brain, 4% PFA 12-24h. Antigen retrieval: Citrate buffer, 98°C, 20 min. Primary antibody: 1: 3000, 4°C overnight. Secondary antibody: HRP conjugated Goat Anti-Rabbit IgG, 1: 200, RT, 1h.