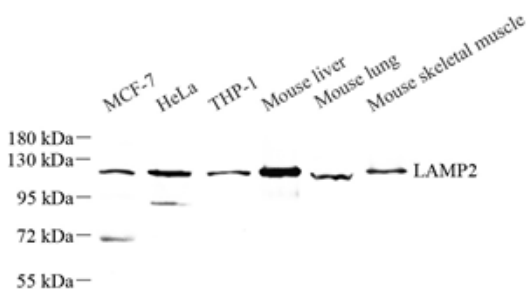


Product name:	Anti-LAMP2 Rabbit Polyclonal Antibody
Cat number:	ABS11848
Conjugate:	unconjugated
Size:	100 µL
Clone:	POLY
Concentration:	1mg/ml
Host:	Rabbit
Isotype:	IgG
Immunogen:	KLH conjugated Synthetic peptide corresponding to Mouse LAMP2
Reactivity:	Human, Mouse
Applications:	Western Blot: 1: 500-1: 1000
Molecular Weight:	120 kDa
Purification:	Affinity purification
Form:	Liquid
Buffer:	PBS with 0.02% sodium azide, 100 µg/ml BSA and 50% glycerol.
Storage:	Store at -20 °C for one year. Avoid repeated freeze/ thaw cycles.
Background:	Implicated in tumor cell metastasis. May function in protection of the lysosomal membrane from autodigestion, maintenance of the acidic environment of the lysosome, adhesion when expressed on the cell surface (plasma membrane), and inter-and intracellular signal transduction. Protects cells from the toxic effects of methylating mutagens.



Western blot analysis of LAMP2 at dilution of 1:
500