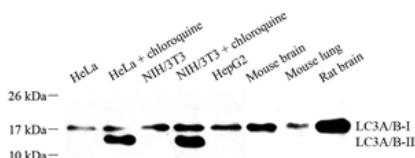
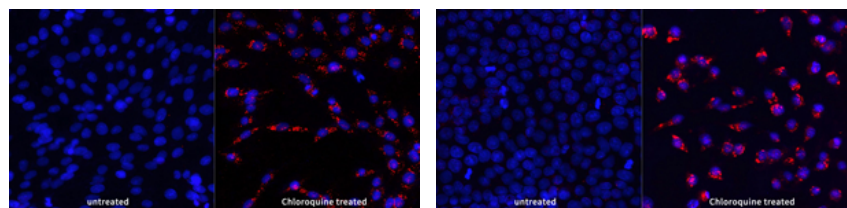


Product name:	Anti-LC3A/B Rabbit pAb
Cat number:	ABS11124
Conjugate:	unconjugated
Size:	100 µL
Concentration:	1mg/ml
Host:	Rabbit
Isotype:	IgG
Immunogen:	KLH conjugated Synthetic peptide corresponding to Mouse LC3B
Reactivity:	Human, Mouse, Rat
Applications:	WB 1: 1000-1: 2000 ICC/IF 1: 300-1: 600
Molecular Weight:	14/16 kDa / 14/16 kDa
Purification:	Affinity purification
Form:	Liquid
Buffer:	PBS with 0.02% sodium azide, 100 µg/ml BSA and 50% glycerol.
Storage:	Store at -20 °C for one year. Avoid repeated freeze/ thaw cycles.

Background: LC3, also known as microtubule-associated protein 1 light chain 3 (MAP1LC3), is a mammalian homolog of the yeast Atg8p (autophagy-related 8 protein) that is involved in autophagy process. Three isoforms of LC3 exist as LC3A, LC3B, and LC3C. LC3 is first synthesized as pro-LC3, and undergoes C-terminal cleavage to yield a cytosolic precursor known as LC3-I. During autophagy LC3-I is subsequently conjugated to PE lipid as lipidated form: LC3-II. The lipidated form migrates faster on SDS-PAGE gel. The increased level of LC3-II has been widely used as autophagy marker. This antibody recognizes both LC3-I and LC3-II.



WB analysis of LC3A/B. Sample: Protein treated by RIPA Lysis Buffer. Blocking buffer: 3% Nonfat dry milk in TBST, RT, 1h. Primary antibody: 1: 1000, 4°C overnight. Secondary antibody: HRP conjugated Goat Anti-Rabbit IgG, 1: 200, RT, 1h.



ICC analysis of LC3A/Bred. Sample: C6, methanol 10min. Blocking buffer: 3% BSA in PBS, RT, 30min. Primary antibody: 1: 500, 4°C overnight. Secondary antibody: Cy3 conjugated Goat Anti-Rabbit IgG, 1: 300, RT, 1h.

ICC analysis of LC3A/Bred. Sample: HeLa, methanol 10min. Blocking buffer: 3% BSA in PBS, RT, 30min. Primary antibody: 1: 500, 4°C overnight. Secondary antibody: Cy3 conjugated Goat Anti-Rabbit IgG, 1: 300, RT, 1h.