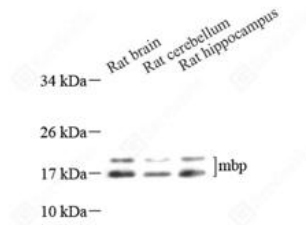


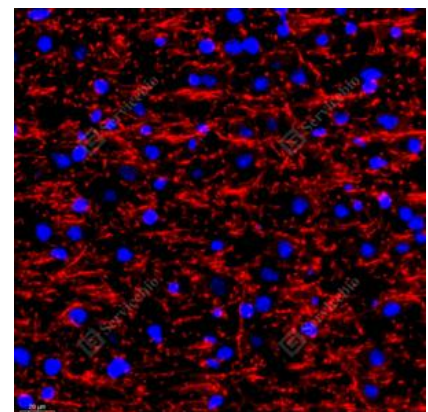
Product name:	Anti-Myelin Basic Protein Rabbit pAb
Cat number:	ABS11226
Conjugate:	unconjugated
Size:	100 µL
Concentration:	1mg/ml
Host:	Rabbit
Isotype:	IgG
Immunogen:	KLH conjugated Synthetic peptide corresponding to Mouse Myelin Basic Protein
Reactivity:	Species, Mouse, Rat
Applications:	Western Blot: 1: 500-1: 1000 Immunohistochemistry:1: 300-1: 600 Immunofluorescence: 1: 300-1: 600
Purification:	Affinity purification
Form:	Liquid
Buffer:	PBS with 0.15% ProClin300, 100 µg/mL BSA and 50% glycerol.
Storage:	Store at -20°C for one year. Avoid repeated freeze/thaw cycles.
Background:	The classic group of MBP isoforms (isoform 4-isoform 13) are with PLP the most abundant protein components of the myelin membrane in the CNS. They have a role in both its formation and stabilization. The non-classic group of MBP isoforms (isoform 1-isoform 3/Golli-MBPs) may preferentially have a role in the early developing brain long before myelination, maybe as components of transcriptional complexes, and may also be involved in signaling pathways in T-cells and neural cells.



WB analysis of Myelin Basic Protein. Sample: Protein treated by RIPA Lysis Buffer .Blocking buffer: 3% Nonfat dry milk in TBST, RT, 1h.Primary antibody: 1: 1000, 4°C overnight.Secondary antibody: HRP conjugated Goat Anti-Rabbit IgG , 1: 5000, RT, 1h.



WB analysis of Myelin Basic Protein. Sample: Protein treated by RIPA Lysis Buffer .Blocking buffer: 3% Nonfat dry milk in TBST, RT, 1h.Primary antibody: 1: 1000, 4°C overnight.Secondary antibody: HRP conjugated Goat Anti-Rabbit IgG , 1: 5000, RT, 1h.



IF analysis of Myelin Basic Protein in rat brain. Sample: Rat brain, 4% PFA 12-24h. Antigen retrieval: Tris-EDTA buffer , 98°C, 20min. Blocking buffer: 3% BSA in PBS, RT, 30min. Primary antibody: 1: 300, 4°C overnight. Secondary antibody: Cy3 conjugated Goat Anti-Rabbit IgG , 1: 300, RT, 1h.