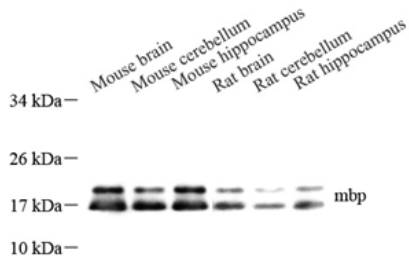


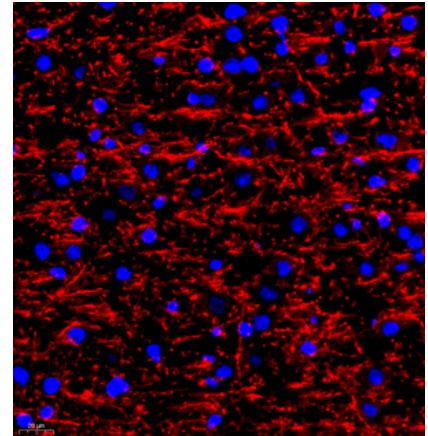
| | |
|--------------------------|---|
| Product name: | Anti-Myelin Basic Protein Rabbit Polyclonal Antibody |
| Cat number: | ABS11226 |
| Conjugate: | unconjugated |
| Size: | 100 µL |
| Concentration: | 1mg/ml |
| Host: | Rabbit |
| Isotype: | IgG |
| Immunogen: | KLH conjugated Synthetic peptide corresponding to Mouse Myelin Basic Protein |
| Reactivity: | Mouse, Rat |
| Applications: | Western Blot: 1: 500-1: 1000 Immunohistochemistry: 1: 300-1: 600 Immunofluorescence: 1: 300-1: 600 |
| Molecular Weight: | 17/20 kDa |
| Purification: | Affinity purification |
| Form: | Liquid |
| Buffer: | PBS with 0.02% sodium azide, 100 µg/ml BSA and 50% glycerol. |
| Storage: | Store at -20 °C for one year. Avoid repeated freeze/ thaw cycles. |
| Background: | The classic group of MBP isoforms (isoform 4-isoform 13) are with PLP the most abundant protein components of the myelin membrane in the CNS. They have a role in both its formation and stabilization. The non-classic group of MBP isoforms (isoform 1-isoform 3/Golli-MBPs) may preferentially have a role in the early developing brain long before myelination, maybe as components of transcriptional complexes, and may also be involved in signaling pathways in T-cells and neural cells. Differential splicing events combined to optional post-translational modifications give a wide spectrum of isomers, with each of them potentially having a specialized function. |



WB analysis of Myelin Basic Protein . Sample:
Protein treated by RIPA Lysis Buffer . Blocking
buffer: 3% Nonfat dry milk in TBST, RT, 1h.
Primary antibody: 1: 1000, 4°C overnight.
Secondary antibody: HRP Goat Anti-Rabbit IgG , 1:
3000, RT, 1h.



IHC analysis of MBP . Sample: Rat striatum , 4%
PFA 12-24h. Antigen retrieval: Citrate buffer
,98°C,20 min. Blocking buffer: 3% BSA in PBS , RT,
30min. Primary antibody: 1: 600, 4°C overnight.
Secondary antibody: HRP Goat Anti-Rabbit IgG , 1:
200 RT 1h.



IF analysis of MBP . Sample: Rat brain , 4% PFA
12-24h. Antigen retrieval: Citrate buffer ,98°C,20
min. Blocking buffer: 3% BSA in PBS , RT, 30min.
Primary antibody: 1: 300, 4°C overnight.
Secondary antibody: Cy3 conjugated Goat Anti-
Rabbit IgG , 1: 300 RT, 1h.