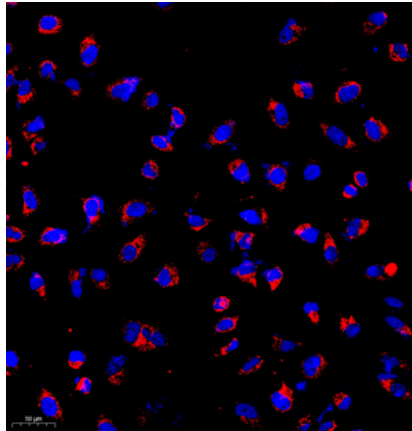
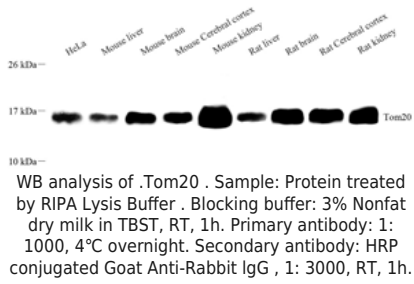
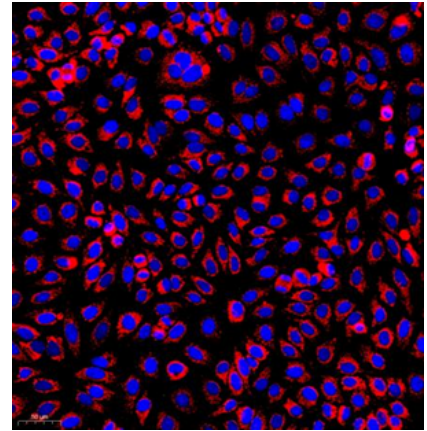

Product name:	Anti-TOMM20 Rabbit pAb
Cat number:	ABS111481
Conjugate:	unconjugated
Size:	100 µL
Concentration:	1mg/ml
Host:	Rabbit
Isotype:	IgG
Immunogen:	Recombinant protein corresponding to Mouse TOMM20
Reactivity:	Human, Mouse, Rat
Applications:	Western Blot: 1: 1000-1: 2000 Immunocytochemistry: 1:500-1:1000 Immunofluorescence: 1:500-1:1000
Molecular Weight:	16 kDa
Purification:	Affinity purification
Form:	Liquid
Buffer:	PBS with 0.02% sodium azide, 100 µg/ml BSA and 50% glycerol.
Storage:	Store at -20 °C for one year. Avoid repeated freeze/thaw cycles.
Background:	TOM20, also named as KIAA0016, belongs to the Tom20 family. It is a central component of the receptor complex responsible for the recognition and translocation of cytosolically synthesized mitochondrial preproteins. Together with TOM22, TOM20 functions as the transit peptide receptor at the surface of the mitochondrion outer membrane and facilitates the movement of preproteins into the TOM40 translocation pore. TOM20 is characterized as major docking receptors to mediate the recognition by different mechanisms.



ICC analysis of .Tom20 red. Sample: HeLa, 4% PFA 20min. Blocking buffer: Blocking buffer: 3% BSA in PBS, RT, 30min. Primary antibody: 1: 1000, 4°C overnight. Secondary antibody: Cy3 conjugated Goat Anti-Rabbit IgG , 1: 300, RT, 1h..



ICC analysis of .Tom20 red. Sample: HepG2, 4% PFA 20min. Blocking buffer: Blocking buffer: 3% BSA in PBS, RT, 30min. Primary antibody: 1: 1000, 4°C overnight. Secondary antibody: Cy3 conjugated Goat Anti-Rabbit IgG , 1: 300, RT, 1h..