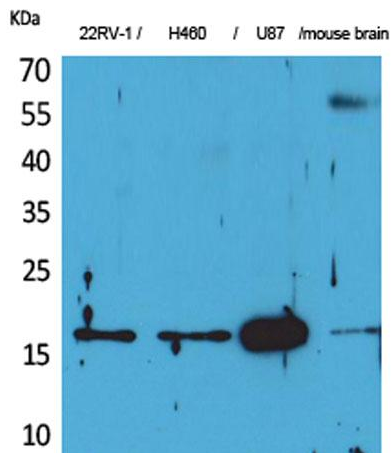
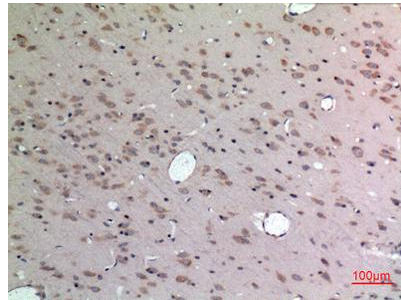


---

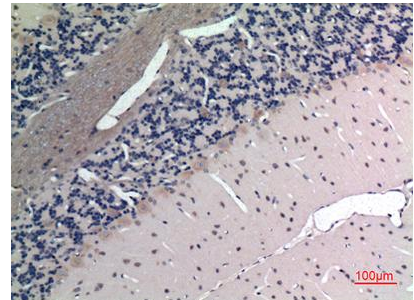
<b>Product name:</b>	Apelin Rabbit Polyclonal Antibody
<b>Cat number:</b>	AB-E3923
<b>Conjugate:</b>	Unconjugated
<b>Size:</b>	100 ug
<b>Clone:</b>	POLY
<b>Concentration:</b>	1mg/ml
<b>Host:</b>	Rabbit
<b>Isotype:</b>	IgG
<b>Immunogen:</b>	The antiserum was produced against synthesized peptide derived from the C-terminal region of human APLN. AA range:28-77
<b>Reactivity:</b>	Human, Mouse, Rat
<b>Applications:</b>	Western Blot: 1/500 - 1/2000 Immunohistochemistry (paraffin-embedded tissues): 1:100-300
<b>Molecular Weight:</b>	16kD
<b>Purification:</b>	The antibody was affinity-purified from rabbit antiserum by affinity-chromatography using epitope-specific immunogen
<b>Form:</b>	Liquid
<b>Buffer:</b>	Liquid in PBS containing 50% glycerol, 0.5% BSA and 0.02% sodium azide
<b>Storage:</b>	Store at -20°C. Avoid repeated freeze-thaw cycles.
<b>Background:</b>	This gene encodes a peptide that functions as an endogenous ligand for the G-protein coupled apelin receptor. The encoded preproprotein is proteolytically processed into biologically active C-terminal peptide fragments. These peptide fragments activate different tissue specific signaling pathways that regulate diverse biological functions including fluid homeostasis, cardiovascular function and insulin secretion. This protein also functions as a coreceptor for the human immunodeficiency virus 1.



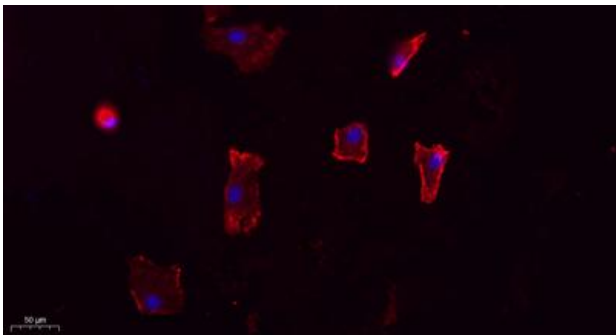
Western Blot analysis of 22RV-1, H460, U87, mouse brain cells using Apelin Polyclonal Antibody. Secondary antibody was diluted at 1:20000



Immunohistochemical analysis of paraffin-embedded rat-brain, antibody was diluted at 1:100



Immunohistochemical analysis of paraffin-embedded rat-brain, antibody was diluted at 1:100



Immunofluorescence analysis of A549. 1,primary Antibody(red) was diluted at 1:200(4°C overnight). 2, Goat Anti Rabbit IgG (H&L) - Alexa Fluor 594 Secondary antibody was diluted at 1:1000(room temperature, 50min).3, Picture B: DAPI(blue) 10min.