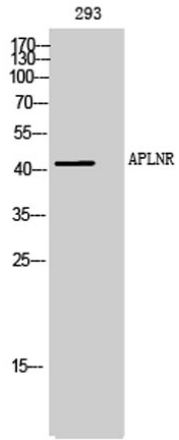
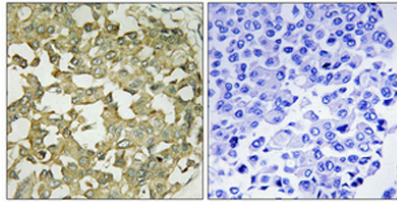


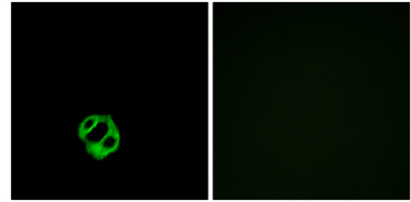
<b>Product name:</b>	APLNR rabbit pAb
<b>Cat number:</b>	ABE5037
<b>Conjugate:</b>	unconjugated
<b>Size:</b>	100 ug
<b>Clone:</b>	Polyclonal
<b>Concentration:</b>	1 mg/ml
<b>Host:</b>	Rabbit
<b>Isotype:</b>	IgG
<b>Immunogen:</b>	The antiserum was produced against synthesized peptide derived from human AGTRL1. AA range:141-190
<b>Reactivity:</b>	Human;Rat;Mouse;
<b>Applications:</b>	Western Blot: 1/500 - 1/2000. Immunohistochemistry: 1/100 - 1/300. Immunofluorescence: 1/200 - 1/1000. ELISA: 1/10000. Not yet tested in other applications.
<b>Molecular Weight:</b>	43kD
<b>Form:</b>	liquid
<b>Storage:</b>	-20°C/1 year
<b>Background:</b>	This gene encodes a member of the G protein-coupled receptor gene family. The encoded protein is related to the angiotensin receptor, but is actually an apelin receptor that inhibits adenylate cyclase activity and plays a counter-regulatory role against the pressure action of angiotensin II by exerting hypertensive effect. It functions in the cardiovascular and central nervous systems, in glucose metabolism, in embryonic and tumor angiogenesis and as a human immunodeficiency virus (HIV-1) coreceptor. Two transcript variants resulting from alternative splicing have been identified. [provided by RefSeq, Jul 2009],



Western Blot analysis of 293 cells using APLNR Polyclonal Antibody



Immunohistochemical analysis of paraffin-embedded Human breast cancer. Antibody was diluted at 1:100(4° overnight). High-pressure and temperature Tris-EDTA,pH8.0 was used for antigen retrieval. Negative contrl (right) obtained from antibody was pre-absor



Immunofluorescence analysis of MCF7 cells, using APLNR Antibody. The picture on the right is blocked with the synthesized peptide.