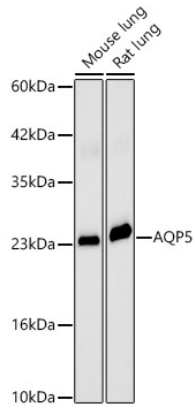
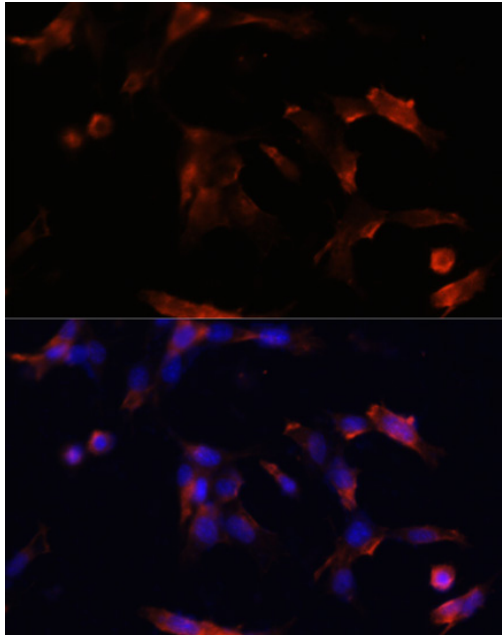
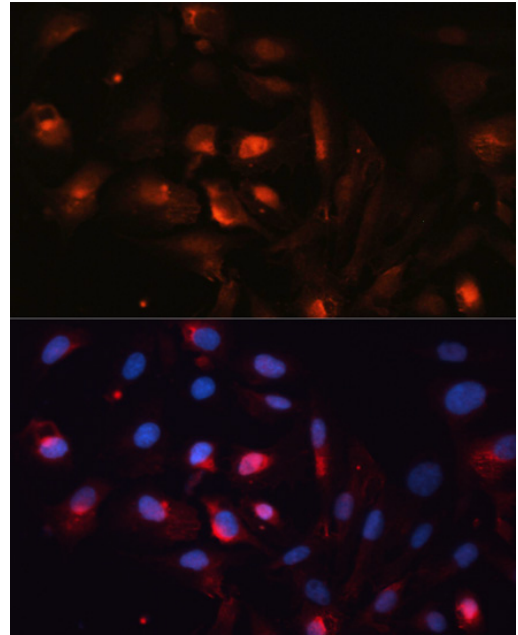

Product name:	Aquaporin 5 (AQP5) Rabbit Polyclonal Antibody
Cat number:	AB-90206
Conjugate:	Unconjugated
Size:	100 ug
Clone:	POLY
Concentration:	1mg/ml
Host:	Rabbit
Isotype:	IgG
Immunogen:	A synthetic peptide corresponding to a sequence within amino acids 188-203 of human AQP5.
Reactivity:	Human, Mouse, Rat
Applications:	Western Blot: 1:1000 - 1:5000 Immunofluorescence: 1:50 - 1:200 Immunocytochemistry: 1:50 - 1:200
Molecular Weight:	24 kDa
Purification:	Affinity purification
Form:	Liquid
Buffer:	PBS with 0.01% thimerosal, 50% glycerol, pH 7.3.
Storage:	Store at -20°C. Avoid freeze / thaw cycles.
Background:	Aquaporin 5 (AQP5) is a water channel protein. Aquaporins are a family of small integral membrane proteins related to the major intrinsic protein (MIP or AQP0). Aquaporin 5 plays a role in the generation of saliva, tears and pulmonary secretions. AQP0, AQP2, AQP5, and AQP6 are closely related and all map to 12q13.



Western blot analysis of various lysates, using AQP5 Rabbit pAb at 1:2000 dilution. Secondary antibody: HRP Goat Anti-Rabbit IgG (H+L) at 1:10000 dilution. Lysates/proteins: 25ug per lane. Blocking buffer: 3% nonfat dry milk in TBST. Detection: ECL West Pico Plus. Exposure time: 60s.



Immunofluorescence analysis of NIH/3T3 cells using AQP5 antibody at dilution of 1:100. Blue: DAPI for nuclear staining.



Immunofluorescence analysis of U2OS cells using AQP5 antibody at dilution of 1:100. Blue: DAPI for nuclear staining.