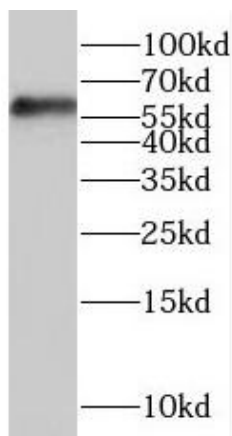


Product name:	ASM Rabbit Polyclonal Antibody
Cat number:	AB-84383
Conjugate:	Unconjugated
Size:	100 ug
Clone:	POLY
Concentration:	1mg/ml
Host:	Rabbit
Isotype:	IgG
Immunogen:	sphingomyelin phosphodiesterase 1, acid lysosomal
Reactivity:	Human, Mouse, Rat
Applications:	Western Blot: 1:500-1:2000
Molecular Weight:	60kDa
Purification:	Immunogen affinity purified
Form:	Liquid
Buffer:	PBS with 0.02% sodium azide and 50% glycerol pH 7.3.
Storage:	Store at -20°C. Avoid freeze / thaw cycles.
Background:	The protein encoded by this gene is a lysosomal acid sphingomyelinase that converts sphingomyelin to ceramide. The encoded protein also has phospholipase C activity. Defects in this gene are a cause of Niemann-Pick disease type A (NPA) and Niemann- Pick disease type B (NPB). Multiple transcript variants encoding different isoforms have been identified.



Mouse cerebellum tissue were subjected to SDS PAGE followed by western blot with (SMPD1, ASM Antibody) at dilution of 1:300.