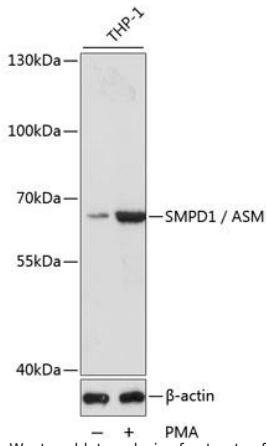
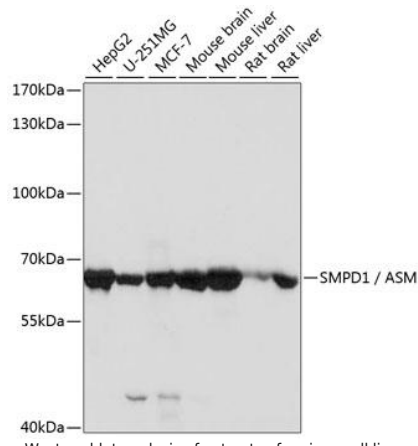


---

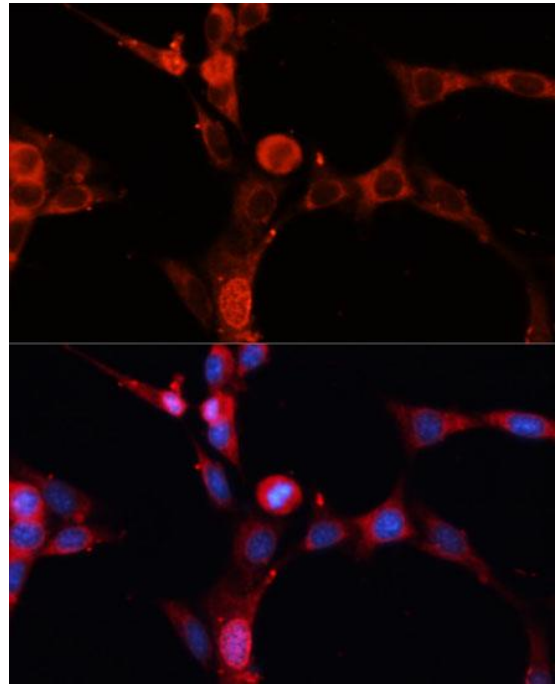
<b>Product name:</b>	ASM
<b>Cat number:</b>	AB-J199
<b>Size:</b>	100ug
<b>Clone:</b>	POLY
<b>Concentration:</b>	1mg/ml
<b>Host:</b>	Rb
<b>Isotype:</b>	IgG
<b>Immunogen:</b>	Recombinant protein of human SMPD1 / ASM
<b>Reactivity:</b>	Hu, Ms
<b>Applications:</b>	Western Blot: 1:500 - 1:2000 Immunofluorescence: 1:50 - 1:100
<b>Molecular Weight:</b>	60kDa
<b>Purification:</b>	Aff. Pur.
<b>Form:</b>	Liquid
<b>Buffer:</b>	PBS with 0.02% sodium azide,50% glycerol, pH7.3.
<b>Storage:</b>	Store at -20°C. Avoid freeze / thaw cycles.
<b>Background:</b>	The protein encoded by this gene is a lysosomal acid sphingomyelinase that converts sphingomyelin to ceramide. The encoded protein also has phospholipase C activity. Defects in this gene are a cause of Niemann-Pick disease type A (NPA) and Niemann- Pick disease type B (NPB). Multiple transcript variants encoding different isoforms have been identified.



Western blot analysis of extracts of THP-1 cells, using ASM antibody at 1:1000 dilution. THP-1 cells were treated by PMA (80 nM) for overnight. Secondary antibody: HRP Goat Anti-Rabbit IgG (H+L) at 1:10000 dilution. Lysates/proteins: 25ug per lane. Blocking buffer: 3% nonfat dry milk in TBST. Detection: ECL West Pico Plus Exposure time: 30s.



Western blot analysis of extracts of various cell lines, using ASM antibody at 1:1000 dilution. Secondary antibody: HRP Goat Anti-Rabbit IgG (H+L) at 1:10000 dilution. Lysates/proteins: 25ug per lane. Blocking buffer: 3% nonfat dry milk in TBST. Detection: ECL West Pico Plus. Exposure time: 30s.



Immunofluorescence analysis of NIH-3T3 cells using ASM Polyclonal Antibody at dilution of 1:100 (40x lens). Blue: DAPI for nuclear staining.