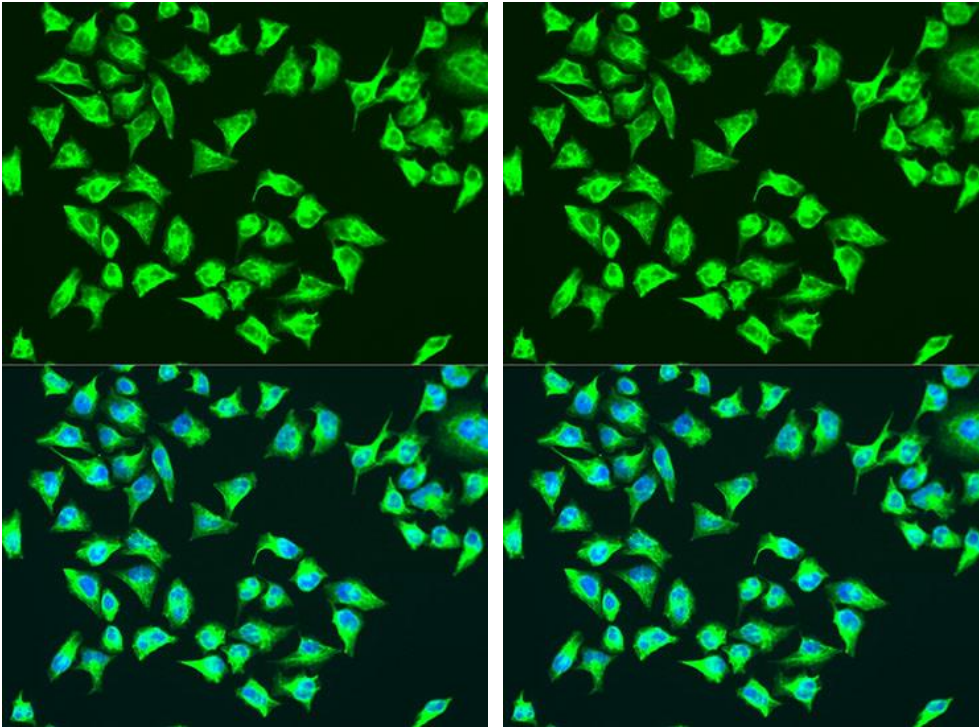

Product name:	ATP6
Cat number:	AB-83828
Conjugate:	Unconjugated
Size:	100 ug
Clone:	POLY
Concentration:	1mg/ml
Host:	Rb
Isotype:	IgG
Immunogen:	A synthetic peptide corresponding to a sequence within amino acids 100 to the C-terminus of mouse ATP6
Reactivity:	Hu, Ms, Rt
Applications:	Western Blot: 1:500-1:1000 Immunohistochemistry: 1:50-1:100 Immunofluorescence: 1:50-1:100
Molecular Weight:	20kDa
Purification:	Aff. Pur.
Form:	Liquid
Buffer:	PBS with 0.02% sodium azide, 50% glycerol, pH7.3.
Storage:	Store at -20°C. Avoid freeze / thaw cycles.



Western blot analysis of extracts of various cell lines, using ATP6 antibody at 1:1000 dilution. Secondary antibody: HRP Goat Anti-Rabbit IgG (H+L) (at 1:10000 dilution). Lysates/proteins: 25ug per lane. Blocking buffer: 3% nonfat dry milk in TBST. Detection: ECL Enhanced Kit Exposure time: 10s.

Immunofluorescence analysis of U2OS cells using ATP6 antibody at dilution of 1:100. Blue: DAPI for nuclear staining.