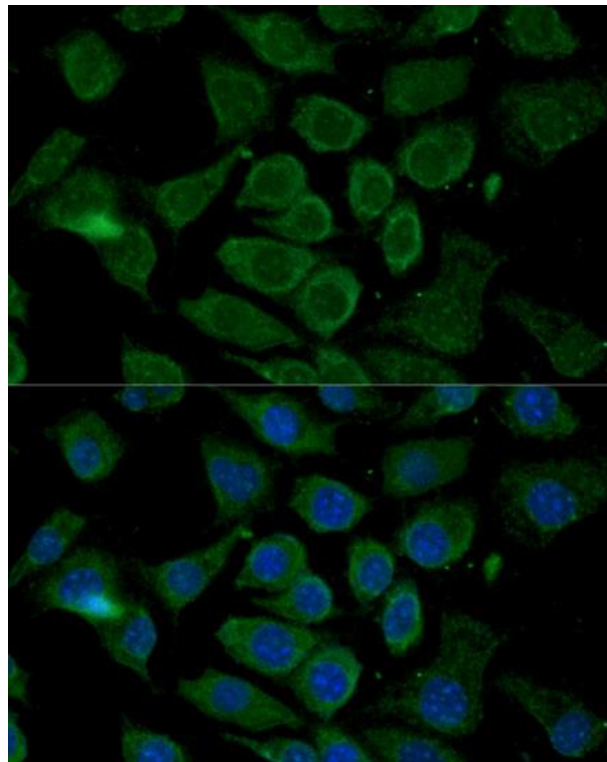
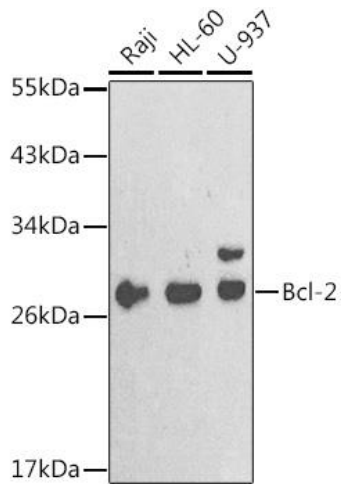


---

<b>Product name:</b>	BCL-2
<b>Cat number:</b>	AB-83984
<b>Conjugate:</b>	Unconjugated
<b>Size:</b>	100 ug
<b>Clone:</b>	POLY
<b>Concentration:</b>	1mg/ml
<b>Host:</b>	Rabbit
<b>Isotype:</b>	IgG
<b>Immunogen:</b>	A synthetic peptide corresponding to a sequence within amino acids 81-131 of human Bcl-2.
<b>Reactivity:</b>	Hu, Ms, Rt
<b>Applications:</b>	Western Blot: 1:500 - 1:1000 Immunofluorescence: 1:50 - 1:100 Immunoprecipitation: 1:50 - 1:100
<b>Molecular Weight:</b>	27kDa
<b>Purification:</b>	Aff. Pur.
<b>Form:</b>	Liquid
<b>Buffer:</b>	PBS with 0.02% sodium azide, 50% glycerol, pH7.3.
<b>Storage:</b>	Store at -20°C. Avoid freeze / thaw cycles.
<b>Background:</b>	This gene encodes an integral outer mitochondrial membrane protein that blocks the apoptotic death of some cells such as lymphocytes. Constitutive expression of BCL2, such as in the case of translocation of BCL2 to Ig heavy chain locus, is thought to be the cause of follicular lymphoma. Alternative splicing results in multiple transcript variants.



Immunofluorescence analysis of L929 cells using Bcl-2 antibody at dilution of 1:100. Blue: DAPI for nuclear staining.