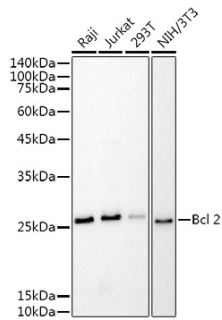
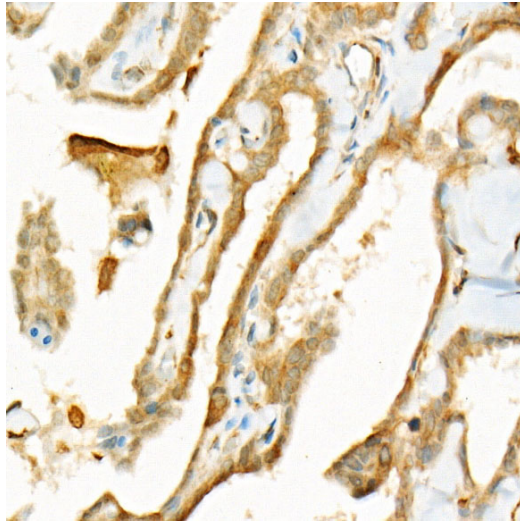


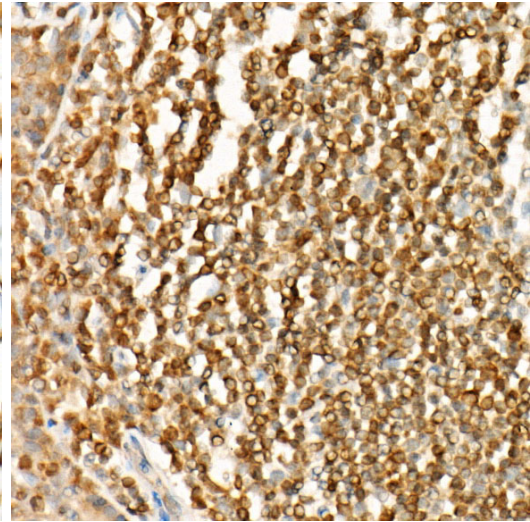
<b>Product name:</b>	BCL-2 Mouse Monoclonal Antibody
<b>Cat number:</b>	MAB-94760
<b>Conjugate:</b>	Unconjugated
<b>Size:</b>	100 ug
<b>Clone:</b>	AMC0441
<b>Concentration:</b>	1mg/ml
<b>Host:</b>	Mouse
<b>Isotype:</b>	IgG1, Kappa
<b>Immunogen:</b>	Recombinant protein of mouse Bcl-2.
<b>Reactivity:</b>	Human, Mouse, Rat
<b>Applications:</b>	Western Blot: 1:500 - 1:1000 Immunohistochemistry: 1:100 - 1:500 Immunofluorescence: 1:50 - 1:200 Immunocytochemistry: 1:50 - 1:200
<b>Molecular Weight:</b>	26KDa
<b>Purification:</b>	Affinity purification
<b>Form:</b>	Liquid
<b>Buffer:</b>	PBS with 0.05% proclin300,50% glycerol,pH7.3.
<b>Storage:</b>	Store at -20°C. Avoid freeze / thaw cycles.
<b>Background:</b>	This gene encodes an integral outer mitochondrial membrane protein that blocks the apoptotic death of some cells such as lymphocytes. Constitutive expression of BCL2, such as in the case of translocation of BCL2 to Ig heavy chain locus, is thought to be the cause of follicular lymphoma. Alternative splicing results in multiple transcript variants.



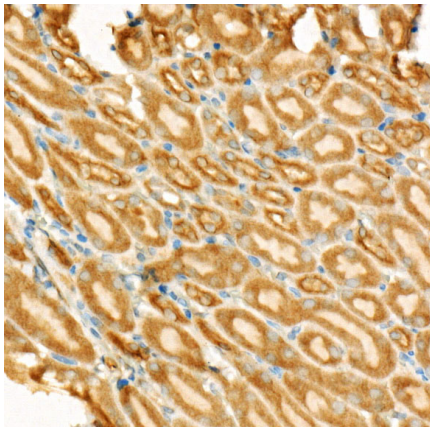
Western blot analysis of extracts of various cell lines, using Bcl-2 antibody (at 1:1000 dilution. Secondary antibody: HRP Goat Anti-Mouse IgG (H+L) at 1:10000 dilution. Lysates/proteins: 25ug per lane. Blocking buffer: 3% nonfat dry milk in TBST. Detection: ECL West Pico plus. Exposure time: 10s.



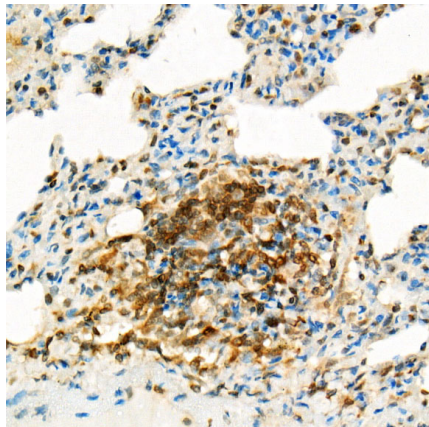
Immunohistochemistry of paraffin-embedded human thyroid cancer using Bcl-2 Mouse mAb at dilution of 1:500 (40x lens). Perform high pressure antigen retrieval with 10 mM citrate buffer pH 6.0 before commencing with IHC staining protocol.



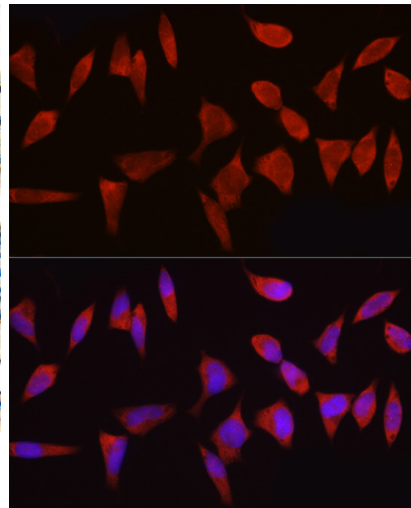
Immunohistochemistry of paraffin-embedded human tonsil using Bcl-2 Mouse mAb at dilution of 1:500 (40x lens). Perform high pressure antigen retrieval with 10 mM citrate buffer pH 6.0 before commencing with IHC staining protocol.



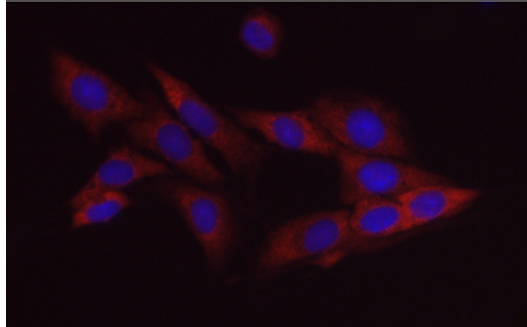
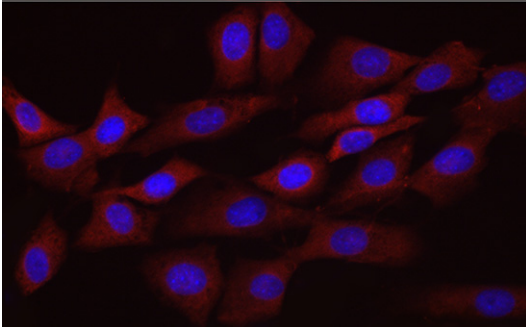
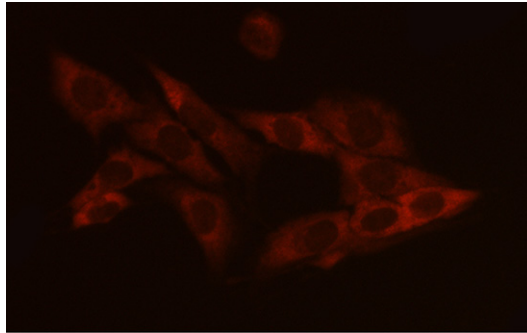
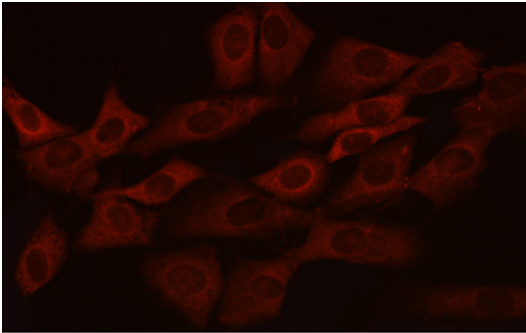
Immunohistochemistry of paraffin-embedded mouse kidney using Bcl-2 Mouse mAb at dilution of 1:500 (40x lens). Perform high pressure antigen retrieval with 10 mM citrate buffer pH 6.0 before commencing with IHC staining protocol.



Immunohistochemistry of paraffin-embedded rat lung using Bcl-2 Mouse mAb at dilution of 1:500 (40x lens). Perform high pressure antigen retrieval with 10 mM citrate buffer pH 6.0 before commencing with IHC staining protocol.



Immunofluorescence analysis of HeLa cells using Bcl-2 Mouse mAb at dilution of 1:100 (40x lens). Blue: DAPI for nuclear staining.



Immunofluorescence analysis of NIH/3T3 cells using Bcl-2 Mouse mAb at dilution of 1:100 (40x lens). Blue: DAPI for nuclear staining.

Immunofluorescence analysis of PC-12 cells using Bcl-2 Mouse mAb at dilution of 1:100 (40x lens). Blue: DAPI for nuclear staining.