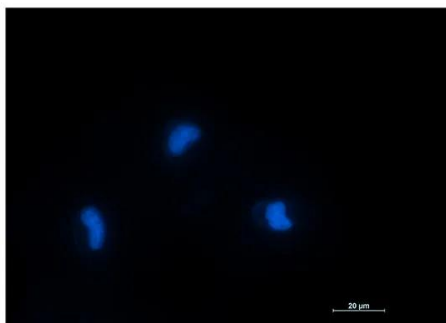
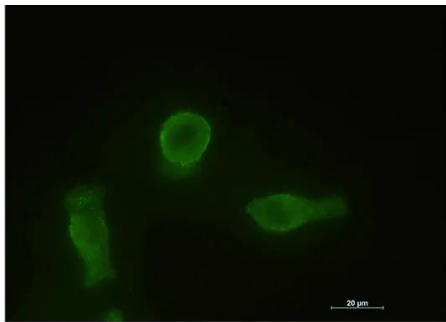
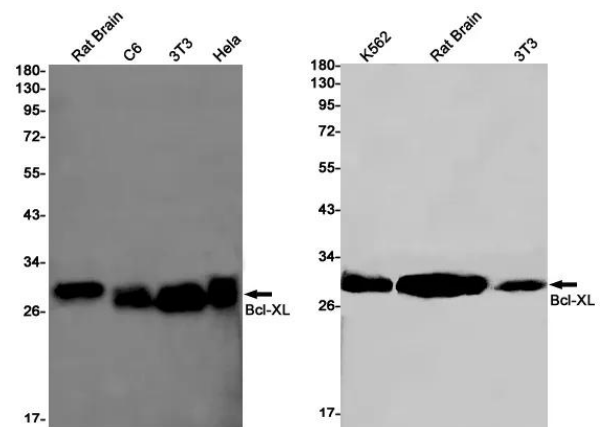


Product name:	Bcl-XL Rabbit Monoclonal Antibody
Cat number:	MABN04056
Conjugate:	Unconjugated
Size:	100µL
Concentration:	1mg/ml
Host:	Rabbit
Isotype:	IgG
Reactivity:	Human,Mouse,Rat
Applications:	WB 1:500-1:1000,IHC 1:50-1:100,ICC/IF 1:50-1:200,IP 1:20-1:50
Molecular Weight:	30 kDa
Purification:	Affinity purification
Form:	liquid
Buffer:	50mM Tris-Glycine(pH 7.4), 0.15M NaCl, 40% Glycerol, 0.01% Sodium azide and 0.05% protective protein
Storage:	Store at 4°C short term. Aliquot and store at -20°C long term. Avoid freeze/thaw cycles.
Background:	The protein encoded by this gene belongs to the BCL-2 protein family. BCL-2 family members form hetero- or homodimers and act as anti- or pro-apoptotic regulators that are involved in a wide variety of cellular activities.



Immunocytochemistry analysis of Bcl-XL (green) in HT-1080 using Bcl-XL antibody, and DAPI(blue).



Western blot analysis of Bcl-XL in rat Brain, C6, 3T3, HeLa lysates using Bcl-XL antibody.

Western blot analysis of Bcl-XL in K562, rat Brain, 3T3 lysates using Bcl-XL antibody