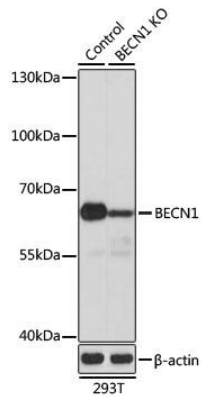
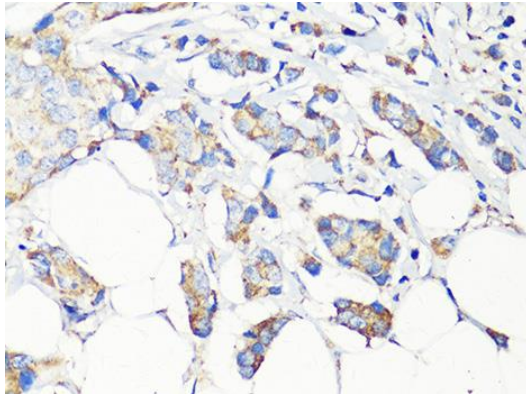


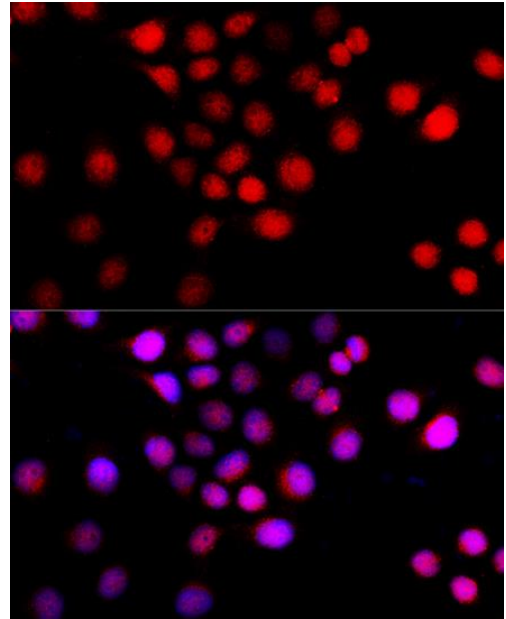
<b>Product name:</b>	BECLIN 1
<b>Cat number:</b>	AB-82599
<b>Conjugate:</b>	Unconjugated
<b>Size:</b>	100 ug
<b>Clone:</b>	POLY
<b>Concentration:</b>	1mg/ml
<b>Host:</b>	Rb
<b>Isotype:</b>	IgG
<b>Immunogen:</b>	Recombinant protein of human BECN1
<b>Reactivity:</b>	Hu,Ms,Rt
<b>Applications:</b>	WB: 1: 500-1:1000 Immunohistochemistry araffin Embedded tissues 1: 100Immunofluorescence: 1:100
<b>Molecular Weight:</b>	60 kDa
<b>Purification:</b>	Aff. Pur.
<b>Form:</b>	Liquid
<b>Buffer:</b>	PBS with 0.02% sodium azide, 50% glycerol, pH7.3.
<b>Storage:</b>	Store at +4°C for short term, at -20° C for 12 months. Avoid Freeze and Thaw Cycles.
<b>Background:</b>	This gene encodes a protein that regulates autophagy, a catabolic process of degradation induced by starvation. The encoded protein is a component of the phosphatidylinositol-3-kinase (PI3K) complex which mediates vesicle-trafficking processes. This protein is thought to play a role in multiple cellular processes, including tumorigenesis, neurodegeneration and apoptosis. Alternative splicing results in multiple transcript variants.



Western blot analysis of extracts from normal (control) and BECN1 knockout (KO) 293T cells, using BECN1 antibody at 1:1000 dilution. Secondary antibody: HRP Goat Anti-Rabbit IgG (H+L) at 1:10000 dilution. Lysates/proteins: 25ug per lane. Blocking buffer: 3% nonfat dry milk in TBST. Detection: ECL Basic Kit. Exposure time: 5s.



Immunohistochemistry of paraffin-embedded human breast cancer using BECN1 antibody at dilution of 1:100 (40x lens).



Immunofluorescence analysis of HeLa cells using BECN1 antibody at dilution of 1:100 (40x lens). Blue: DAPI for nuclear staining.