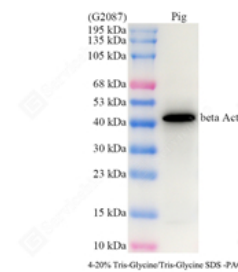
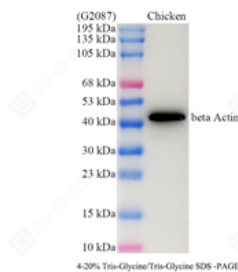


Product name:	Beta Actin Mouse Monoclonal Antibody
Cat number:	MABS15001
Conjugate:	unconjugated
Size:	100 µL
Concentration:	1mg/ml
Host:	Rabbit
Isotype:	IgG1
Immunogen:	KLH conjugated synthetic peptide corresponding to Mouse beta-Actin
Reactivity:	Species, Human, Mouse, Rat, Pg, Ch, Bv, Sh, Gt, Mk, Rb, Ta, Frog, Human, Mouse, Rat
Applications:	Applications Dilution WB 1: 3000-1: 5000 IHC/IF 1: 500-1: 1000 ICC/IF 1: 300-1: 1000
Molecular Weight:	42 kDa / 42 kDa
Purification:	Affinity purification
Form:	Liquid
Buffer:	PBS with 0.02% sodium azide, 100 µg/ml BSA and 50% glycerol.
Storage:	Store at -20 °C for one year. Avoid repeated freeze/thaw cycles.
Background:	Actins are highly conserved proteins that are involved in various types of cell motility and are ubiquitously expressed in all eukaryotic cells. In vertebrates 3 main groups of actin isoforms, alpha, beta and gamma have been identified. The alpha actins are found in muscle tissues and are a major constituent of the contractile apparatus.



WB analysis of beta Actin . Sample: Protein treated by RIPA Lysis Buffer . Blocking buffer: 3% Nonfat dry milk in TBST, RT, 1h. Primary antibody: 1: 3000, 4°C overnight. Secondary antibody: HRP conjugated Goat Anti-Mouse IgG , 1: 3000, RT, 1h.

WB analysis of beta Actin . Sample: Protein treated by RIPA Lysis Buffer . Blocking buffer: 3% Nonfat dry milk in TBST, RT, 1h. Primary antibody: 1: 3000, 4°C overnight. Secondary antibody: HRP conjugated Goat Anti-Mouse IgG , 1: 3000, RT, 1h.

WB analysis of beta Actin . Sample: Protein treated by RIPA Lysis Buffer . Blocking buffer: 3% Nonfat dry milk in TBST, RT, 1h. Primary antibody: 1: 3000, 4°C overnight. Secondary antibody: HRP conjugated Goat Anti-Mouse IgG , 1: 3000, RT, 1h.