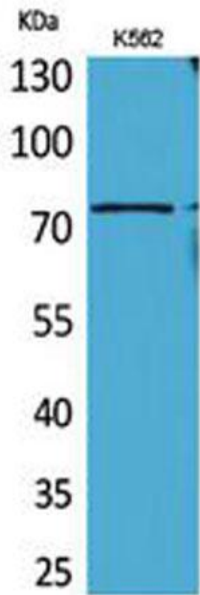
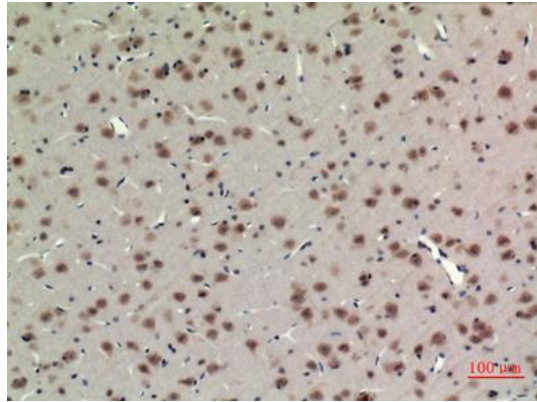

Product name:	BMAL1 Rabbit Polyclonal Antibody
Cat number:	AB-E4441
Conjugate:	unconjugated
Size:	100 ug
Clone:	Polyclonal
Concentration:	1mg/ml
Host:	Rabbit
Isotype:	IgG
Immunogen:	The antiserum was produced against synthesized peptide derived from human BMAL1 around the non-acetylation site of Lys538. AA range:501-550
Reactivity:	Human, Mouse, Rat
Applications:	Western Blot 1:500- 1:2000 IHC (P): 1:100 - 1:300 Elisa 1:20000
Molecular Weight:	69kd
Purification:	affinity purified
Form:	Liquid
Buffer:	PBS containing 50% glycerol, 0.5% BSA and 0.02% sodium azide
Storage:	Store at -20°C. Avoid repeated freeze-thaw cycles.
Background:	The protein encoded by this gene is a basic helix-loop-helix protein that forms a heterodimer with CLOCK. This heterodimer binds E-box enhancer elements upstream of Period (PER1, PER2, PER3) and Cryptochrome (CRY1, CRY2) genes and activates transcription of these genes. PER and CRY proteins heterodimerize and repress their own transcription by interacting in a feedback loop with CLOCK/ARNTL complexes. Defects in this gene have been linked to infertility, problems with gluconeogenesis and lipogenesis, and altered sleep patterns.



Western Blot analysis of K562 cells using BMAL1 Polyclonal Antibody. Secondary antibody was diluted at 1:20000 cells nucleus extracted



Immunohistochemical analysis of paraffin-embedded rat-brain, antibody was diluted at 1:100