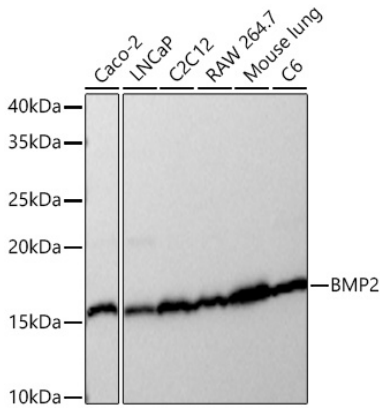
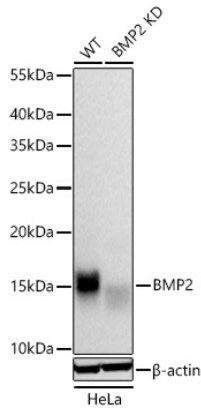


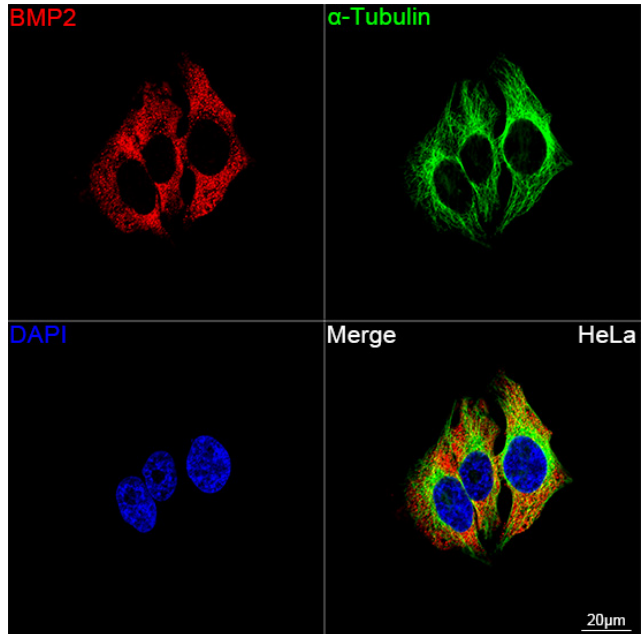
Product name:	BMP2 Rabbit Monoclonal Antibody
Cat number:	MAB27101
Conjugate:	Unconjugated
Size:	100 ug
Concentration:	1mg/ml
Host:	Rabbit
Isotype:	IgG
Immunogen:	Recombinant protein.This information is considered to be commercially sensitive.
Reactivity:	Human,Mouse,Rat
Applications:	WB 1:1000 - 1:6000 IF/ICC 1:100 - 1:800 IP 0.5µg-4µg antibody for 300µg-500µg extracts of whole cells ELISA Recommended starting concentration is 1 µg/mL.
Molecular Weight:	12-45kDa
Purification:	Affinity purification
Form:	liquid
Buffer:	PBS with 0.09% Sodium azide,0.05% BSA,50% glycerol,pH7.3.
Storage:	Store at -20°C. Avoid freeze / thaw cycles.
Background:	This gene encodes a secreted ligand of the TGF-beta (transforming growth factor-beta) superfamily of proteins. Ligands of this family bind various TGF-beta receptors leading to recruitment and activation of SMAD family transcription factors that regulate gene expression. The encoded preproprotein is proteolytically processed to generate each subunit of the disulfide-linked homodimer, which plays a role in bone and cartilage development. Duplication of a regulatory region downstream of this gene causes a form of brachydactyly characterized by a malformed index finger and second toe in human patients.



Western blot analysis of various lysates using BMP2 Rabbit mAb at 1:1000 dilution incubated at room temperature for 1.5 hours. Secondary antibody: HRP-conjugated Goat anti-Rabbit IgG (H+L) at 1:10000 dilution. Lysates/proteins: 25 µg per lane. Blocking buffer: 3% nonfat dry milk in TBST. Detection: ECL Basic Kit (RM00020). Exposure time: 1s.



Western blot analysis of various lysates using BMP2 Rabbit mAb at 1:1000 dilution incubated overnight at 4°C. Secondary antibody: HRP-conjugated Goat anti-Rabbit IgG (H+L) at 1:10000 dilution. Lysates/proteins: 25 µg per lane. Blocking buffer: 3% nonfat dry milk in TBST. Detection: ECL West Pico Plus. Negative control (NC): LNCaP. Exposure time: 1s.



Confocal imaging of HeLa cells using BMP2 Rabbit mAb (dilution 1:100) followed by a further incubation with Cy3 Goat Anti-Rabbit IgG (H+L) (, dilution 1:500) (Red). The cells were counterstained with α -Tubulin Mouse mAb (dilution 1:400) followed by incubation with AF488-conjugated Goat Anti-Mouse IgG (H+L) Ab (dilution 1:500) (Green). DAPI was used for nuclear staining (Blue). Objective: 100x.