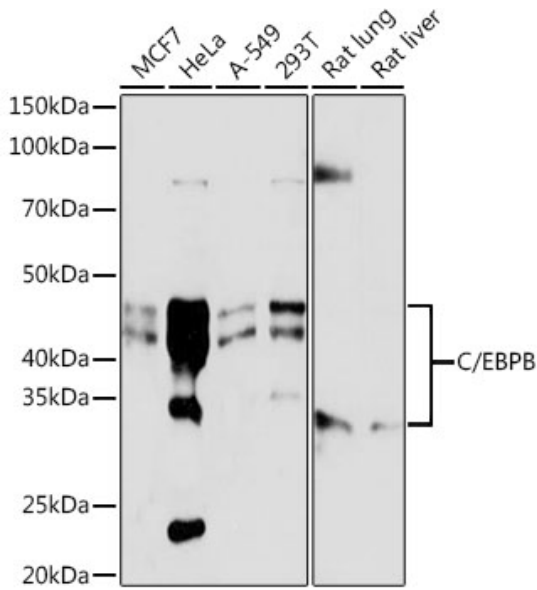


Product name:	C/EBPB Rabbit Polyclonal Antibody
Cat number:	AB-84810
Conjugate:	Unconjugated
Size:	100 ug
Clone:	POLY
Concentration:	1mg/ml
Host:	Rabbit
Isotype:	IgG
Immunogen:	A synthetic peptide corresponding to a sequence within amino acids 246-345 of human C/EBPB
Reactivity:	Human, Rat
Applications:	Western Blot: 1:500 - 1:1000
Molecular Weight:	32-47kDa
Purification:	Affinity purification
Form:	Liquid
Buffer:	Store at -20°C. Avoid freeze / thaw cycles.
Storage:	PBS with 0.02% sodium azide,0.05% BSA,50% glycerol,pH7.3.
Background:	This intronless gene encodes a transcription factor that contains a basic leucine zipper (bZIP) domain. The encoded protein functions as a homodimer but can also form heterodimers with CCAAT/enhancer-binding proteins alpha, delta, and gamma. Activity of this protein is important in the regulation of genes involved in immune and inflammatory responses, among other processes. The use of alternative in-frame AUG start codons results in multiple protein isoforms, each with distinct biological functions.



Western blot analysis of extracts of various cell lines, using C/EBPB antibody at 1:1000 dilution. Secondary antibody: HRP Goat Anti-Rabbit IgG (H+L) at 1:10000 dilution. Lysates/proteins: 25µg per lane. Blocking buffer: 3% nonfat dry milk in TBST. Detection: ECL West Pico Plus. Exposure time: 1s.