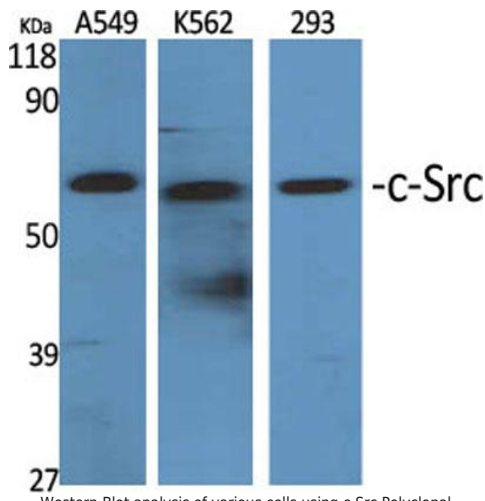
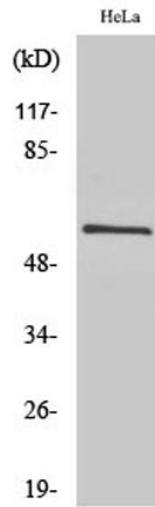


---

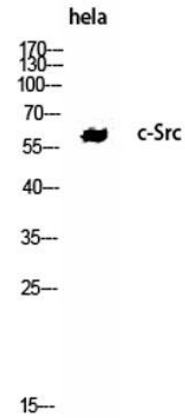
<b>Product name:</b>	c-Src Rabbit Polyclonal Antibody
<b>Cat number:</b>	AB-84358
<b>Conjugate:</b>	Unconjugated
<b>Size:</b>	100 ug
<b>Clone:</b>	POLY
<b>Concentration:</b>	1mg/ml
<b>Host:</b>	Rabbit
<b>Isotype:</b>	IgG
<b>Immunogen:</b>	The antiserum was produced against synthesized peptide derived from human Src. AA range:487-536
<b>Reactivity:</b>	Human;Mouse;Rat
<b>Applications:</b>	Western Blot: 1/500 - 1/2000. Immunohistochemistry: 1/100 - 1/300 Immunoprecipitation 1:50-200
<b>Molecular Weight:</b>	59kD
<b>Purification:</b>	The antibody was affinity-purified from rabbit antiserum by affinity-chromatography using epitope-specific immunogen.
<b>Form:</b>	Liquid
<b>Buffer:</b>	Liquid in PBS containing 50% glycerol, 0.5% BSA and 0.02% sodium azide.
<b>Storage:</b>	Store at -20°C. Avoid repeated freeze-thaw cycles.
<b>Background:</b>	This gene is highly similar to the v-src gene of Rous sarcoma virus. This proto-oncogene may play a role in the regulation of embryonic development and cell growth. The protein encoded by this gene is a tyrosine-protein kinase whose activity can be inhibited by phosphorylation by c-SRC kinase. Mutations in this gene could be involved in the malignant progression of colon cancer. Two transcript variants encoding the same protein have been found for this gene.



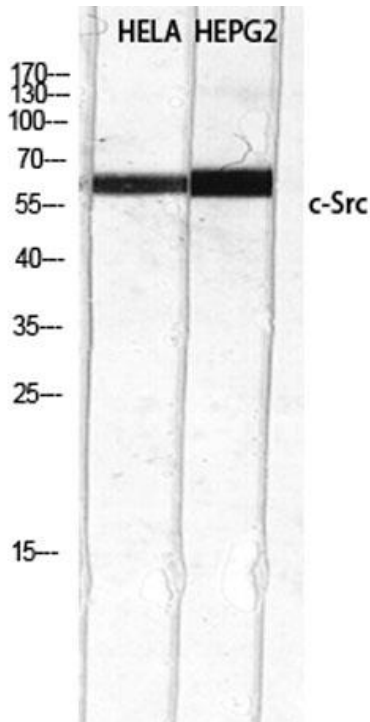
Western Blot analysis of various cells using c-Src Polyclonal Antibody diluted at 1:2000



Western Blot analysis of HeLa cells using c-Src Polyclonal Antibody diluted at 1:2000



Western Blot analysis of hela using c-Src Polyclonal Antibody. Antibody was diluted at 1:2000



Western Blot analysis of HELA HEPG2 using c-Src Polyclonal Antibody diluted at 1:2000