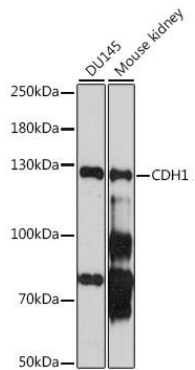
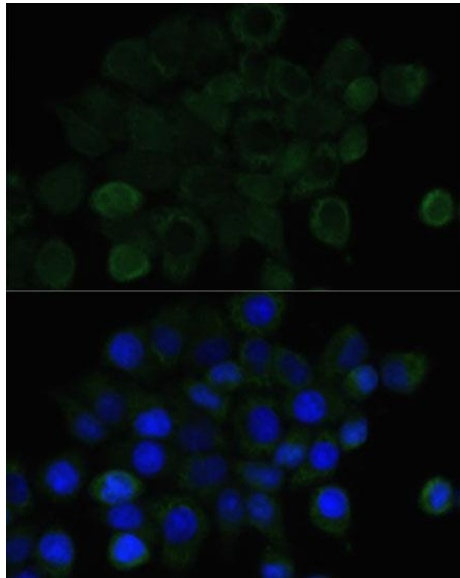
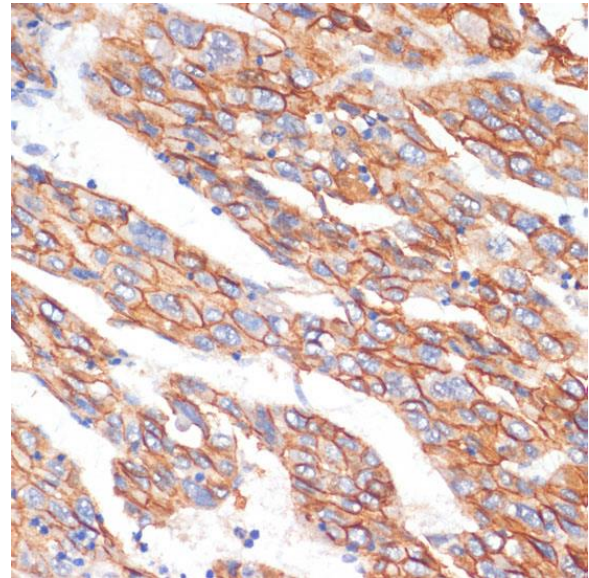

Product name:	Cadherin-E
Cat number:	AB-83857
Conjugate:	Unconjugated
Size:	100 ug
Clone:	POLY
Concentration:	1mg/ml
Host:	Rb
Isotype:	IgG
Immunogen:	Recombinant fusion protein containing a sequence corresponding to amino acids 373-622 of human CDH1
Reactivity:	Hu, Ms, Rt
Applications:	Western Blot: 1:500-1:2000 Immunohistochemistry: 1:100 Immunofluorescence: 1:100
Molecular Weight:	125kDa
Purification:	Aff. Pur.
Form:	Liquid
Buffer:	PBS with 0.02% sodium azide,50% glycerol,pH7.3.
Storage:	Store at -20°C. Avoid freeze / thaw cycles.
Background:	<p>This gene encodes a classical cadherin of the cadherin superfamily. Alternative splicing results in multiple transcript variants, at least one of which encodes a preproprotein that is proteolytically processed to generate the mature glycoprotein. This calcium dependent cell-cell adhesion protein is comprised of five extracellular cadherin repeats, a transmembrane region and a highly conserved cytoplasmic tail. Mutations in this gene are correlated with gastric, breast, colorectal, thyroid and ovarian cancer. Loss of function of this gene is thought to contribute to cancer progression by increasing proliferation, invasion, and/or metastasis. The ectodomain of this protein mediates bacterial adhesion to mammalian cells and the cytoplasmic domain is required for internalization. This gene is present in a gene cluster with other members of the cadherin family on chromosome 16</p>



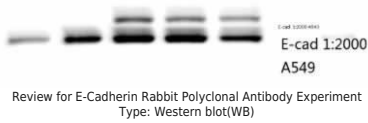
Western blot analysis of extracts of various cell lines, using CDH1 antibody at 1:1000 dilution. Secondary antibody: HRP Goat Anti-Rabbit IgG (H+L) at 1:10000 dilution. Lysates/proteins: 25ug per lane. Blocking buffer: 3% nonfat dry milk in TBST. Detection: ECL Basic Kit. Exposure time: 90s.



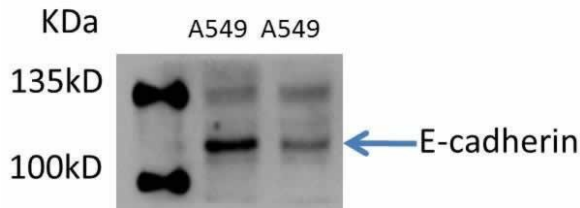
Immunofluorescence analysis of HeLa cells using CDH1 antibody at dilution of 1:100. Blue: DAPI for nuclear staining.



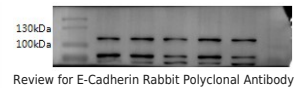
Immunohistochemistry of paraffin Embedded human liver cancer using E-Cadherin antibody at dilution of 1:100 (40x lens).



Review for E-Cadherin Rabbit Polyclonal Antibody Experiment Type: Western blot(WB)



Review for E-Cadherin Rabbit Polyclonal Antibody Experiment: Type Western blot(WB) Sample: A549



Review for E-Cadherin Rabbit Polyclonal Antibody