

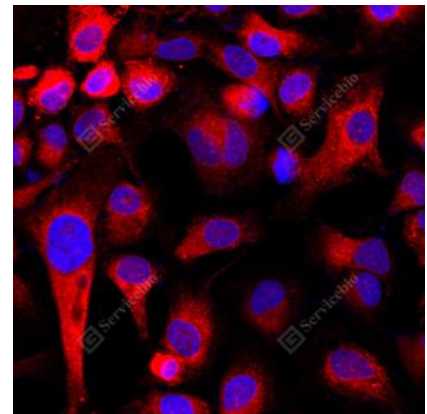
Product name:	Calnexin Rabbit Polyclonal Antibody
Cat number:	ABS111369
Conjugate:	unconjugated
Size:	100 µL
Concentration:	1mg/ml
Host:	Rabbit
Isotype:	IgG
Immunogen:	KLH conjugated Synthetic peptide corresponding to Mouse Calnexin
Reactivity:	Species, Human, Mouse, Rat, Human, Mouse
Applications:	Applications Dilution WB 1: 500-1: 1000 ICC/IF 1: 50-1: 100
Purification:	Affinity purification
Form:	Liquid
Buffer:	PBS with 0.15% ProClin300, 100 µg/mL BSA and 50% glycerol.
Storage:	Store at -20°C for one year. Avoid repeated freeze/thaw cycles.
Background:	Calnexin is a molecular chaperone that resides in the endoplasmic reticulum (ER) and participates in the folding and assembly of newly synthesized proteins. Calnexin is highly abundant in ER and is frequently used as an ER marker.



WB analysis of Calnexin. Sample: Protein treated by RIPA Lysis Buffer .Blocking buffer: 3% Nonfat dry milk in TBST, RT, 1h. Primary antibody: 1: 1000, 4°C overnight. Secondary antibody: HRP conjugated Goat Anti-Rabbit IgG , 1: 5000, RT, 1h.



WB analysis of Calnexin. Sample: Protein treated by RIPA Lysis Buffer .Blocking buffer: 3% Nonfat dry milk in TBST, RT, 1h. Primary antibody: 1: 1000, 4°C overnight. Secondary antibody: HRP conjugated Goat Anti-Rabbit IgG , 1: 5000, RT, 1h.



ICC analysis of Calnexin. Sample: HeLa, 4% PFA 20min. Blocking buffer: 3% BSA in PBS, RT, 30min. Primary antibody: 1: 50, 4°C overnight. Secondary antibody: Cy3 conjugated Goat Anti-Rabbit IgG , 1: 300, RT, 1h.