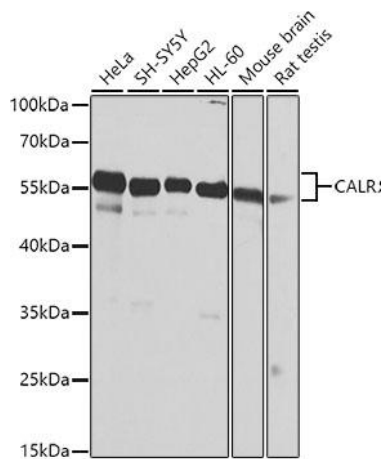
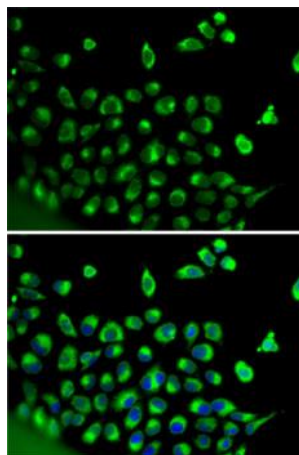

Product name:	CALReticulin
Cat number:	AB-84126
Size:	100 ug
Clone:	POLY
Concentration:	1mg/ml
Host:	Rb
Isotype:	IgG
Immunogen:	Recombinant fusion protein containing a sequence corresponding to amino acids 18-417 of human CALR (NP_004334.1).
Reactivity:	Hu, Ms, Rt
Applications:	Western Blot: 1:500 - 1:1000 Immunohistochemistry: 1:50 - 1:100 Immunofluorescence: 1:20 - 1:100 Immunoprecipitation: 1:50 - 1:100
Molecular Weight:	55kDa
Purification:	Aff. Pur.
Form:	Liquid
Buffer:	PBS with 0.02% sodium azide, 50% glycerol, pH7.3.
Storage:	Store at -20°C. Avoid freeze / thaw cycles.

Background:

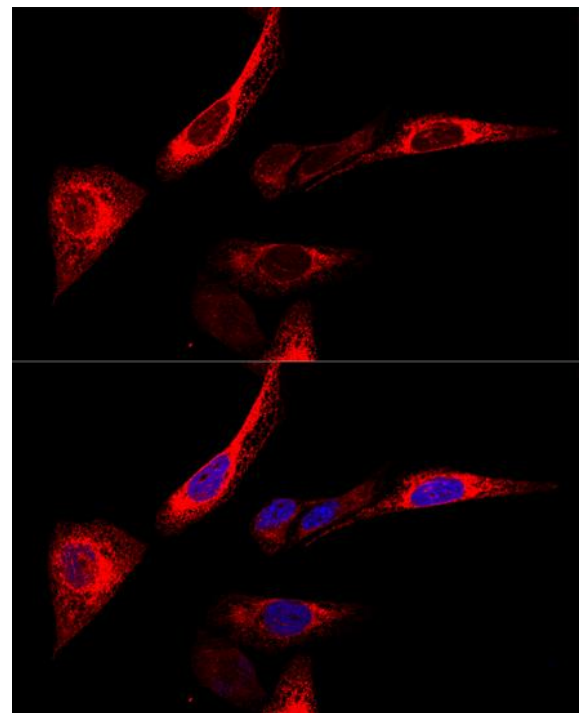
Calreticulin is a multifunctional protein that acts as a major Ca(2+)-binding (storage) protein in the lumen of the endoplasmic reticulum. It is also found in the nucleus, suggesting that it may have a role in transcription regulation. Calreticulin binds to the synthetic peptide KLGFFKR, which is almost identical to an amino acid sequence in the DNA-binding domain of the superfamily of nuclear receptors. Calreticulin binds to antibodies in certain sera of systemic lupus and Sjogren patients which contain anti-Ro/SSA antibodies, it is highly conserved among species, and it is located in the endoplasmic and sarcoplasmic reticulum where it may bind calcium. The amino terminus of calreticulin interacts with the DNA-binding domain of the glucocorticoid receptor and prevents the receptor from binding to its specific glucocorticoid response element. Calreticulin can inhibit the binding of androgen receptor to its hormone-responsive DNA element and can inhibit androgen receptor and retinoic acid receptor transcriptional activities in vivo, as well as retinoic acid-induced neuronal differentiation. Thus, calreticulin can act as an important modulator of the regulation of gene transcription by nuclear hormone receptors. Systemic lupus erythematosus is associated with increased autoantibody titers against calreticulin but calreticulin is not a Ro/SS-A antigen. Earlier papers referred to calreticulin as an Ro/SS-A antigen but this was later disproven. Increased autoantibody titer against human calreticulin is found in infants with complete congenital heart block of both the IgG and IgM classes.



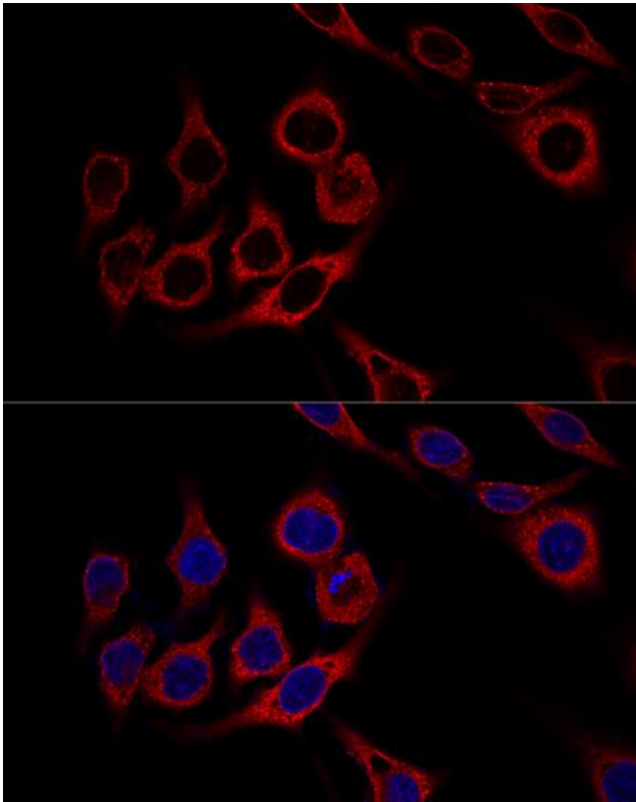
Western blot analysis of extracts of various cell lines, using CALR antibody at 1:1000 dilution. Secondary antibody: HRP Goat Anti- Rabbit IgG (H+L) at 1:10000 dilution. Lysates/proteins: 25ug per lane. Blocking buffer: 3% nonfat dry milk in TBST. Detection: eci WEST Pico Plus Exposure time: 1s.



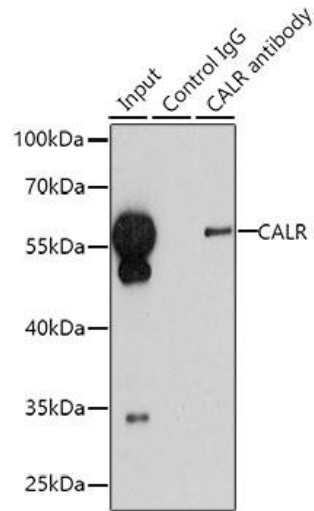
Immunofluorescence analysis of HeLa cells using CALR antibody. Blue: DAPI for nuclear staining.



Confocal immunofluorescence analysis of U-2OS cells using CALR antibody, at dilution of 1:400. Blue: DAPI for nuclear staining.



Confocal immunofluorescence analysis of HeLa cells using CALR at dilution of 1:400. Blue: DAPI for nuclear staining.



Immunoprecipitation analysis of 200ug extracts of HepG2 cells using 1ug CALR antibody. Western blot was performed from the immunoprecipitate using CALR antibody at a dilution of 1:1000.