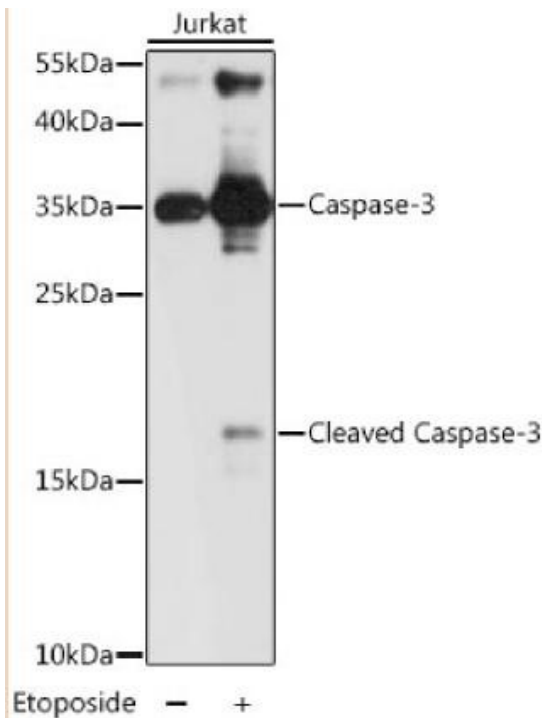


Product name:	Caspase 3 Rabbit Polyclonal antibody
Cat number:	AB-83835
Conjugate:	Unconjugated
Size:	100 ug
Clone:	POLY
Concentration:	1mg/ml
Host:	Rabbit
Isotype:	IgG
Immunogen:	Recombinant protein of human CASP3
Reactivity:	Human , Mouse , Rat
Applications:	Western Blot: 1:1000 Immunohistochemistry:1:100 Immunofluorescence: 1:50 - 1:100 Immunoprecipitation: 1:50 - 1:100
Molecular Weight:	Casp3: 35kDa - cleaved Casp3: 17kDa
Purification:	Affinity purification
Form:	Liquid
Buffer:	PBS with 0.02% sodium azide, 50% glycerol, pH7.3
Storage:	Store at -20°C (regular) Avoid freeze / thaw cycles.
Background:	Caspase-3 (CPP-32, Apoptain, Yama, SCA-1) is a critical executioner of apoptosis, as it is either partially or totally responsible for the proteolytic cleavage of many key proteins such as the nuclear enzyme poly(ADP-ribose) polymerase (PARP) (1). Activation of caspase-3 requires proteolytic processing of its inactive zymogen into activated p17 and p12 fragments. Cleavage of caspase-3 requires aspartic acid at the P1 position (2).



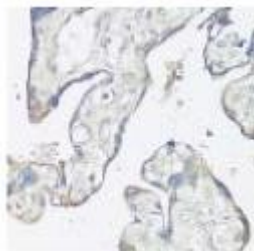
Western blot analysis of extracts of Jurkat cells at 1:1000 dilution. Jurkat cells treated by Etoposide 25uM etoposide for 5 hours. Secondary antibody: HRP Goat Anti-Rabbit IgG (H+L) ins: 25ug per lane. Blocking buffer: 3% nonfat dry milk in TBST. Detection: ECL Pico Exposure time: 3s. AB83240 can detect both the full length and the cleaved form.



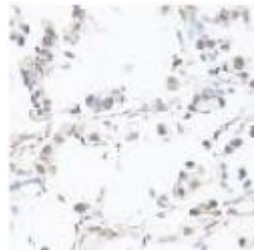
Immunohistochemistry of paraffin-embedded human tonsil using CASP3 antibody at dilution of 1:100.



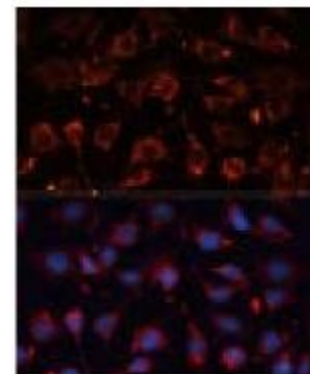
Immunohistochemistry of paraffin-embedded rat brain using CASP3 antibody at dilution of 1:100



Immunohistochemistry of paraffin-embedded human placenta using CASP3 antibody at dilution of 1:100



Immunohistochemistry of paraffin-embedded human gastric cancer using CASP3 antibody at dilution of 1:100



Immunofluorescence analysis of C6 cells using CASP3 antibody at dilution of 1:100. Blue: DAPI for nuclear staining.