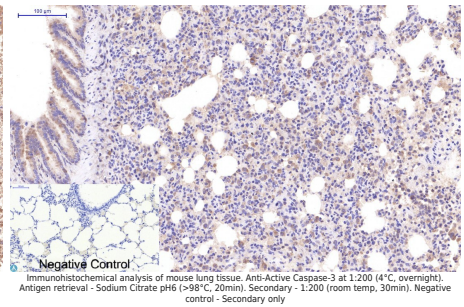
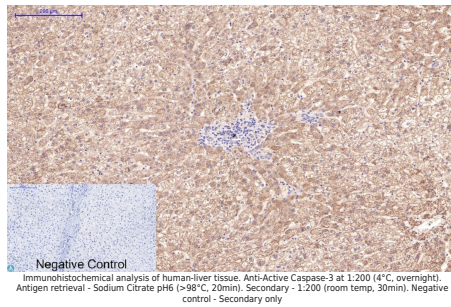
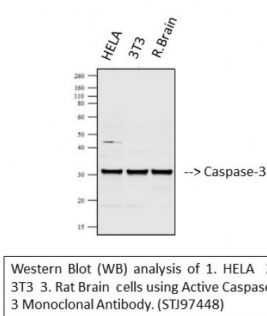
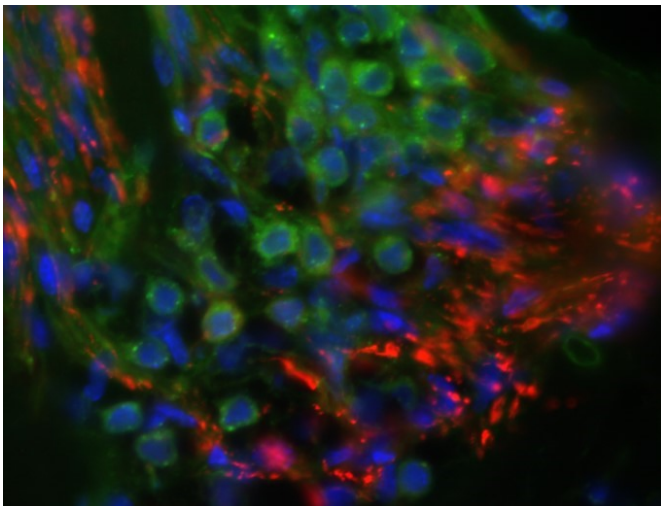


---

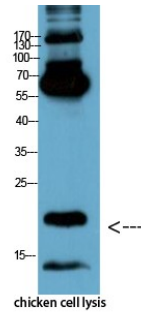
<b>Product name:</b>	Caspase 3 (active) Mouse Monoclonal Antibody
<b>Cat number:</b>	MAB-94427
<b>Conjugate:</b>	Unconjugated
<b>Size:</b>	100 ug
<b>Clone:</b>	5E1
<b>Concentration:</b>	1mg/ml
<b>Host:</b>	Mouse
<b>Isotype:</b>	IgG1
<b>Immunogen:</b>	Recombinant Protein
<b>Reactivity:</b>	Avian, Human, Mouse, Rat
<b>Applications:</b>	Western Blot: 1:500-1000 Immunohistochemistry: 1:100-200 Immunofluorescence: 1:100
<b>Molecular Weight:</b>	31 kDa
<b>Purification:</b>	The antibody was affinity-purified from mouse ascites by affinity chromatography using epitope-specific immunogen.
<b>Form:</b>	Liquid
<b>Buffer:</b>	Liquid in PBS containing 50% glycerol, 0.5% BSA and 0.02% sodium azide.
<b>Storage:</b>	Store at -20°C, and avoid repeat freeze-thaw cycles.
<b>Background:</b>	Active caspase-3 is a protein encoded by the CASP3 gene which is approximately 31,6 kDa. Active caspase-3 is localised to the cytoplasm. It is involved in the TNFR1 pathway, apoptosis modulation and signaling and respiratory electron transport. This protein falls under the cysteineaspartic acid protease family. It is a sequential activator of caspases and plays a central role in the execution-phase of cell apoptosis. Caspases exist as inactive proenzymes which undergo proteolytic processing at conserved aspartic residues to produce two subunits, large and small, that dimerize to form the active enzyme. Active caspase-3 is highly expressed in lung, spleen, heart, liver and kidney. Mutations in the CASP3 gene may result in bladder urothelial carcinoma and primary effusion lymphoma. Active Caspase 3 was affinity-purified from mouse ascites by affinity-chromatography using epitope-specific immunogen. This antibody detects endogenous active caspase-3 protein.



Western Blot analysis of 1. HELA 2.0 3T3 Rat Brain cells using Active Caspase-3 Monoclonal Antibody



Application Immunofluorescence Antibody Name Anti-cleaved-caspase-3 Primary Dilution 1:100 Primary Probing for 2' at 13krpm to remove clumps and applied to sections. Slides are left o/n at 4C Secondary Antibody Anti-rabbit alexa 568 Reference Antibody N/A Secondary Dilution 1:400 Secondary Probing RT for 2h - alexa 568 and alexa489 Tissue Cochlea Tissue Processing 30% and then embedded in OCT. Sections are cut at 12um onto gelatin-subbed slides and stored at -20C. Positive Control N/A Negative Control N/A Blocking 1-2h in 5% donkey serum/1% BSA in PBS/triton. Wash several times for 5' each in PBS triton Visualization Sections are mounted in a fluorescence-protective medium Specificity 3 Findings 1:100 seems to be okay, doesn't give too much background staining



Western Blot analysis of chicken cell lysis using Antibody diluted at 1:1000

