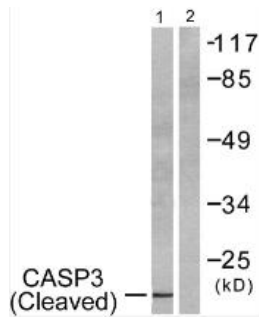
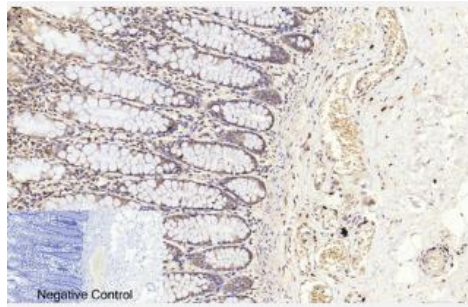
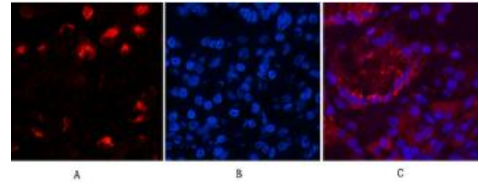

Product name:	Caspase 3 (cleaved) Rabbit Polyclonal Antibody
Cat number:	AB-83240
Conjugate:	Unconjugated
Size:	100 ug
Clone:	POLY
Concentration:	1mg/ml
Host:	Rabbit
Isotype:	IgG
Immunogen:	The antiserum was produced against synthesized peptide derived from human Caspase 3. AA range:126- 175
Reactivity:	Hu, Ms, Rt
Applications:	Western blot: 1:500-1:2000 Immunohistochemistry (paraffin embedded tissues): 1:50-300 Immunofluorescence: 1:50-300
Molecular Weight:	17kDa, 34kDa
Purification:	The antibody was affinity- purified from rabbit antiserum by affinity- chromatography using epitope- specific immunogen.
Form:	Liquid
Buffer:	Liquid in PBS containing 50% glycerol, 0.5% BSA and 0.02% sodium azide.
Storage:	Store at -20°C. Avoid repeated freeze-thaw cycles.
Background:	<p>caspase 3(CASP3) Homo sapiens This gene encodes a protein which is a member of the cysteine- aspartic acid protease (caspase) family. Sequential activation of caspases plays a central role in the execution-phase of cell apoptosis. Caspases exist as inactive proenzymes which undergo proteolytic processing at conserved aspartic residues to produce two subunits, large and small, that dimerize to form the active enzyme. This protein cleaves and activates caspases 6, 7 and 9, and the protein itself is processed by caspases 8, 9 and 10. It is the predominant caspase involved in the cleavage of amyloid-beta 4A precursor protein, which is associated with neuronal death in Alzheimer's disease. Alternative splicing of this gene results in two transcript variants that encode the same protein.</p>



Western blot analysis of lysates from 293 cells, treated with Etoposide 25uM 60', using Caspase 3 (Cleaved-Asp175) Antibody. The lane on the right is blocked with the synthesized peptide.



Immunohistochemical analysis of paraffin-embedded Human-colon tissue. 1, Cleaved-Caspase-3 p17 (D175) Polyclonal Antibody was diluted at 1:200(4°C, overnight). 2, Sodium citrate pH 6.0 was used for antibody retrieval(>98°C, 20min). 3, Secondary antibody was diluted at 1:200(room temperature, 30min). Negative control was used by secondary antibody only.



Immunofluorescence analysis of Human-lung-cancer tissue. 1, Cleaved-Caspase-3 p17 (D175) Polyclonal Antibody (red) was diluted at 1:200(4°C, overnight). 2, Cy3 labeled Secondary antibody was diluted at 1:300(room temperature, 50min). 3, Picture B: DAPI(blue) 10min. Picture A: Target. Picture B: DAPI. Picture C: merge of A+B