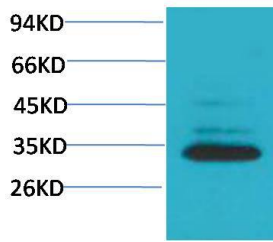
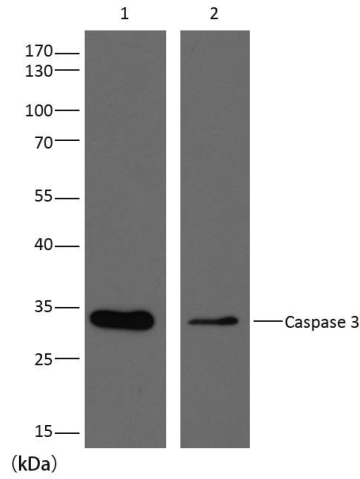


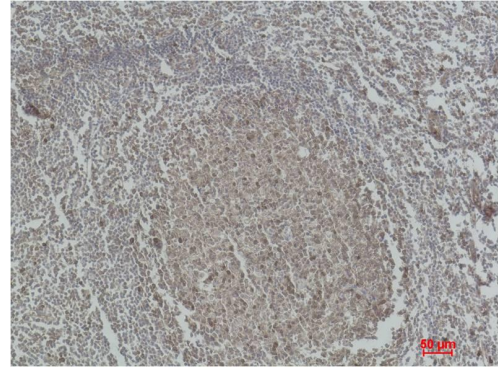
<b>Product name:</b>	Caspase 3 Rabbit Polyclonal Antibody
<b>Cat number:</b>	AB-83771
<b>Conjugate:</b>	Unconjugated
<b>Size:</b>	100 ug
<b>Clone:</b>	POLY
<b>Concentration:</b>	1mg/ml
<b>Host:</b>	Rb
<b>Isotype:</b>	IgG
<b>Immunogen:</b>	Recombinant Protein
<b>Reactivity:</b>	Hu, Ms, Rt
<b>Applications:</b>	WesternBlot:1/1000-2000 Immunohistochemistry:1/200-500
<b>Molecular Weight:</b>	32kDa
<b>Purification:</b>	Aff. Pur.
<b>Form:</b>	Liquid
<b>Buffer:</b>	PBS with 0.02% sodium azide and 50% glycerol pH 7.4.
<b>Storage:</b>	Store at -20°C. Avoid repeated freeze-thaw cycles.
<b>Background:</b>	Caspase-3 (CPP-32, Apoptain, Yama, SCA-1) is a critical executioner of apoptosis, as it is either partially or totally responsible for the proteolytic cleavage of many key proteins such as the nuclear enzyme poly(ADPribose) polymerase (PARP).



Western blot analysis of HeLa with Caspase 3 Rabbit pAb diluted at 1:2,000.



Western blot analysis of extracts from HeLa (Lane 1), Rat Brain (Lane 2), using Caspase 3 diluted at 1:2,000.



Immunohistochemical analysis of paraffin-embedded Human Tonsil Tissue using Caspase 3 Rabbit pAb diluted at 1:500.