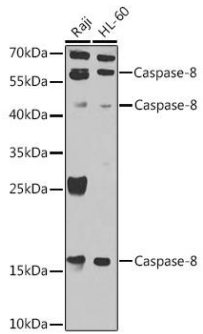
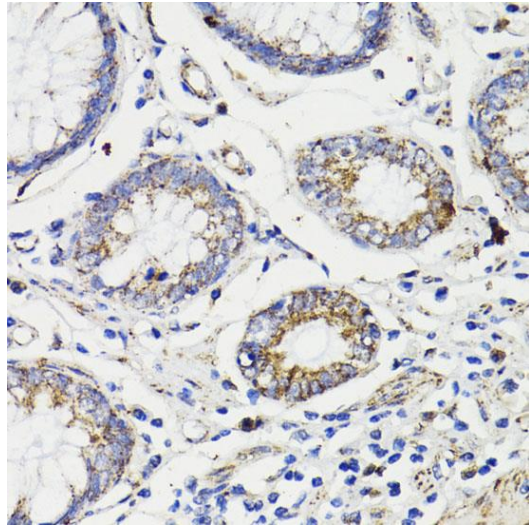
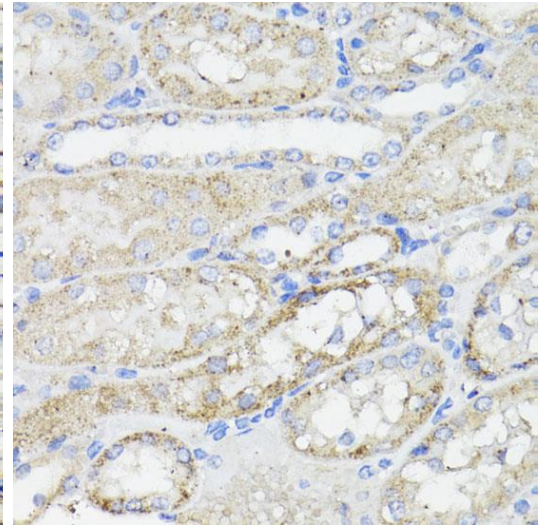

Product name:	Caspase 8
Cat number:	AB-82858
Size:	100µg
Clone:	POLY
Concentration:	1mg/ml
Host:	Rb
Isotype:	IgG
Immunogen:	Recombinant fusion protein containing a sequence corresponding to amino acids 1-479 of human Caspase-8.
Reactivity:	Ms, Rt, Hu
Applications:	Western Blot: 1:500 - 1:2000 Immunohistochemistry: 1:50 - 1:200 Immunofluorescence: 1:50 - 1:200
Molecular Weight:	17kDa/44kDa/60kDa
Purification:	Aff. Pur.
Form:	Liquid
Buffer:	PBS with 0.02% sodium azide and 50% glycerol pH 7.4
Storage:	Store at -20°C, and avoid repeat freeze-thaw cycles.
Background:	<p>This gene encodes a member of the cysteine-aspartic acid protease (caspase) family. Sequential activation of caspases plays a central role in the execution-phase of cell apoptosis. Caspases exist as inactive proenzymes composed of a prodomain, a large protease subunit, and a small protease subunit. Activation of caspases requires proteolytic processing at conserved internal aspartic residues to generate a heterodimeric enzyme consisting of the large and small subunits. This protein is involved in the programmed cell death induced by Fas and various apoptotic stimuli. The N-terminal FADD-like death effector domain of this protein suggests that it may interact with Fas-interacting protein FADD. This protein was detected in the insoluble fraction of the affected brain region from Huntington disease patients but not in those from normal controls, which implicated the role in neurodegenerative diseases. Many alternatively spliced transcript variants encoding different isoforms have been described, although not all variants have had their full-length sequences determined.</p>



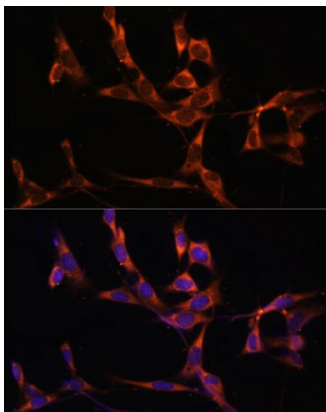
Western blot analysis of extracts of various cell lines, using Caspase-8 antibody at 1:1000 dilution. Secondary antibody: HRP Goat Anti-Rabbit IgG (H+L) at 1:10000 dilution. Lysates/proteins: 25ug per lane. Blocking buffer: 3% nonfat dry milk in TBST. Detection: ECL West Pico Plus. Exposure time: 30s.



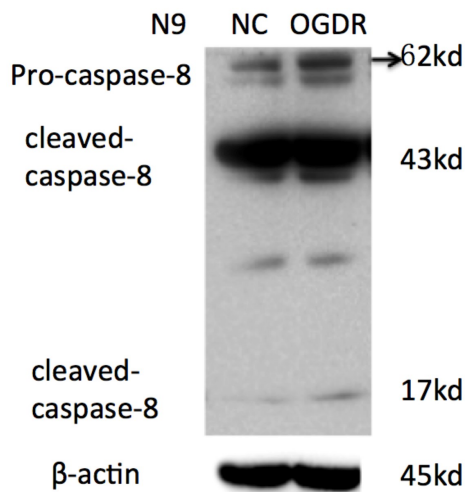
Immunohistochemistry of paraffin embedded human colon carcinoma using Caspase-8 antibody at dilution of 1:200 (40x lens).



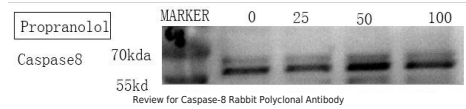
Immunohistochemistry of paraffin embedded mouse kidney using Caspase-8 antibody at dilution of 1:200 (40x lens).



Immunofluorescence analysis of NIH/3T3 cells using Caspase-8 antibody at dilution of 1:100. Blue: DAPI for nuclear staining.



Review for Caspase-8 Rabbit Polyclonal Antibody Experiment. Type Western blot(WB) Sample N9 Description: Western blot analysis of extracts of N9 cells, using antibody at 1:200 dilution.



Review for Caspase-8 Rabbit Polyclonal Antibody