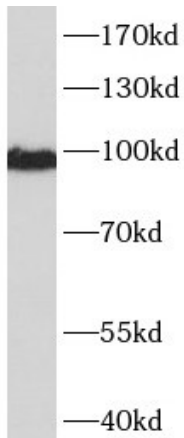
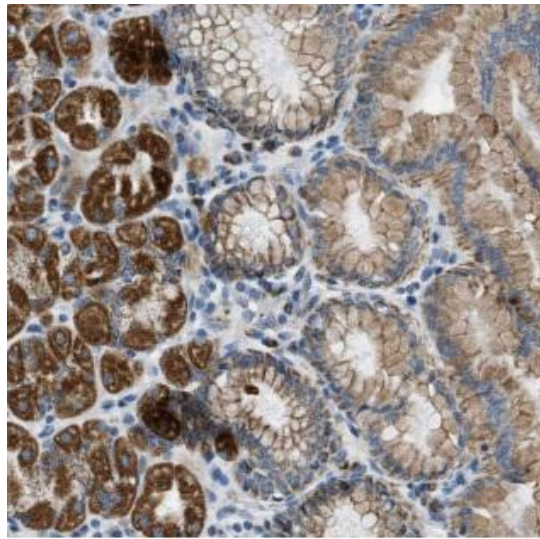


---

|                          |  |
|--------------------------|--|
| <b>Product name:</b>     | Catenin alpha-1/CTNNA1   |
| <b>Cat number:</b>       | MAB-94590  |
| <b>Size:</b>             | 100 ug   |
| <b>Clone:</b>            | alpha-CAT-7A4  |
| <b>Concentration:</b>    | 1mg/ml   |
| <b>Host:</b>             | Ms   |
| <b>Isotype:</b>          | IgG1   |
| <b>Immunogen:</b>        | catenin(cadherin-associated protein), alpha 1, 102kDa  |
| <b>Reactivity:</b>       | Hu, Ms   |
| <b>Applications:</b>     | Western Blot: 1:500-1:2000 Immunohistochemistry (paraffin-embedded tissues):1:50-1:1000  |
| <b>Molecular Weight:</b> | 95-100kDa  |
| <b>Purification:</b>     | Protein A+G purification .   |
| <b>Form:</b>             | Liquid   |
| <b>Buffer:</b>           | PBS with 0.02% sodium azide and 50% glycerol pH 7.3  |
| <b>Storage:</b>          | Storage-20°C for 12 months (Avoid repeated freeze / thaw cycles.) T483   |
| <b>Background:</b>       | Associates with the cytoplasmic domain of a variety of cadherins. The association of catenins to cadherins produces a complex which is linked to the actin filament network, and which seems to be of primary importance for cadherins cell-adhesion properties. Can associate with both E-and N-cadherins. Originally believed to be a stable component of E-cadherin/catenin adhesion complexes and to mediate the linkage of cadherins to the actin cytoskeleton at adherens junctions. In contrast, cortical actin was found to be much more dynamic than E-cadherin/catenin complexes and CTNNA1 was shown not to bind to F-actin when assembled in the complex suggesting a different linkage between actin and adherens junctions components. The homodimeric form may regulate actin filament assembly and inhibit actin branching by competing with the Arp2/3 complex for binding to actin filaments. May play a crucial role in cell differentiation. |



NIH/3T3 cells were subjected to SDS PAGE followed by western blot with (CTNNA1 Antibody) at dilution of 1:1000



Immunohistochemistry of paraffin-embedded human stomach tissue slide using (CTNNA1 Antibody) at dilution of 1:200