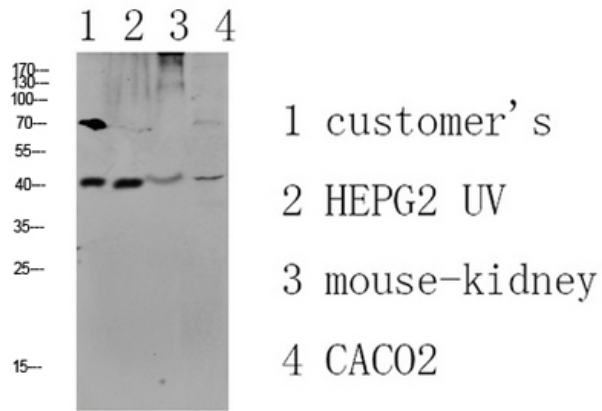


---

<b>Product name:</b>	CCR5 rabbit Polyclonal Antibody
<b>Cat number:</b>	ABE8888
<b>Conjugate:</b>	unconjugated
<b>Size:</b>	100 ug
<b>Clone:</b>	Polyclonal
<b>Concentration:</b>	1 mg/ml
<b>Host:</b>	Rabbit
<b>Isotype:</b>	IgG
<b>Immunogen:</b>	Synthesized peptide derived from human CCR5 Polyclonal
<b>Reactivity:</b>	Human;Mouse;Rat
<b>Applications:</b>	WB 1:500-2000, ELISA 1:10000-20000
<b>Molecular Weight:</b>	40kD
<b>Purification:</b>	The antibody was affinity-purified from rabbit antiserum by affinity-chromatography using epitope-specific immunogen.
<b>Form:</b>	liquid
<b>Buffer:</b>	Liquid in PBS containing 50% glycerol, 0.5% BSA and 0.02% sodium azide.
<b>Storage:</b>	-20°C/1 year
<b>Background:</b>	<p>This gene encodes a member of the beta chemokine receptor family, which is predicted to be a seven transmembrane protein similar to G protein-coupled receptors. This protein is expressed by T cells and macrophages, and is known to be an important co-receptor for macrophage-tropic virus, including HIV, to enter host cells. Defective alleles of this gene have been associated with the HIV infection resistance. The ligands of this receptor include monocyte chemoattractant protein 2 (MCP-2), macrophage inflammatory protein 1 alpha (MIP-1 alpha), macrophage inflammatory protein 1 beta (MIP-1 beta) and regulated on activation normal T expressed and secreted protein (RANTES). Expression of this gene was also detected in a promyeloblastic cell line, suggesting that this protein may play a role in granulocyte lineage proliferation and differentiation. This gene is located at the chemok</p>



Western blot analysis of various lysate, antibody was diluted at 1000. Secondary antibody was diluted at 1:20000