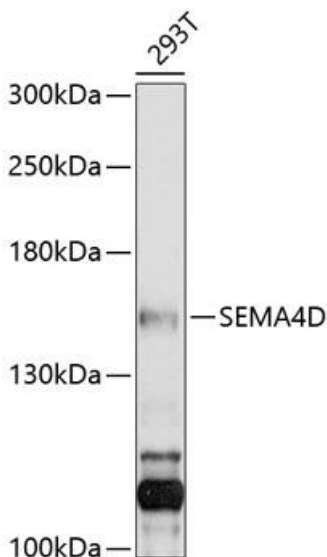


| | |
|--------------------------|--|
| Product name: | CD100/SEMA42 |
| Cat number: | AB-84214 |
| Size: | 100 ug |
| Clone: | POLY |
| Concentration: | 1mg/ml |
| Host: | Rb |
| Isotype: | IgG |
| Immunogen: | Recombinant fusion protein containing a sequence corresponding to amino acids 753-862 of human SEMA4D. |
| Reactivity: | Hu |
| Applications: | Western Blot: 1:200 - 1:1000 |
| Molecular Weight: | 150kDa |
| Purification: | Aff. Pur. |
| Form: | Liquid |
| Buffer: | PBS with 0.02% sodium azide, 50% glycerol, pH7.3. |
| Storage: | Store at -20°C. Avoid freeze / thaw cycles. |



Western blot analysis of extracts of 293T cells, using SEMA4D antibody at 1:1000 dilution. Secondary antibody: HRP Goat Anti- Rabbit IgG (H+L) at 1:10000 dilution. Lysates/proteins: 25ug per lane. Blocking buffer: 3% nonfat dry milk in TBST. Detection: ECL West Pico Plus. Exposure time: 10s.