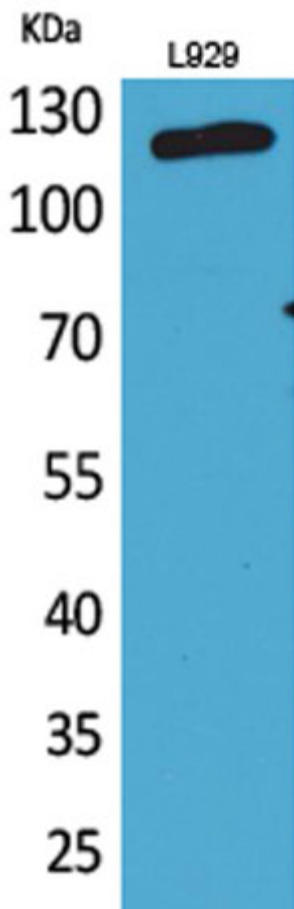
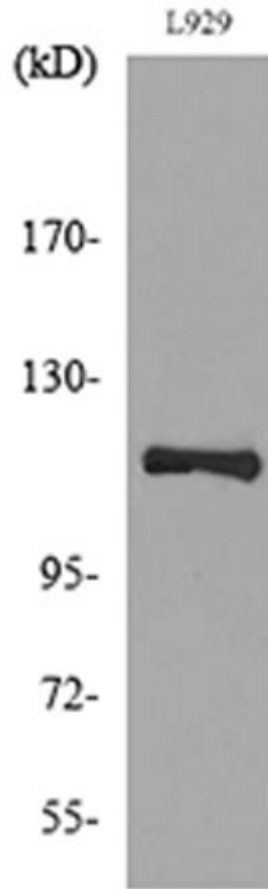


<b>Product name:</b>	CD107a/ LAMP1 rabbit Polyclonal Antibody
<b>Cat number:</b>	ABE3990
<b>Conjugate:</b>	unconjugated
<b>Size:</b>	100 ug
<b>Clone:</b>	Polyclonal
<b>Concentration:</b>	1 mg/ml
<b>Host:</b>	Rabbit
<b>Isotype:</b>	IgG
<b>Immunogen:</b>	The antiserum was produced against synthesized peptide derived from the Internal region of human LAMP1. AA range:211-260
<b>Reactivity:</b>	Human;Rat;Mouse;
<b>Applications:</b>	Western Blot: 1/500 - 1/2000. ELISA: 1/20000. Not yet tested in other applications.
<b>Molecular Weight:</b>	120kD
<b>Form:</b>	liquid
<b>Storage:</b>	-20°C/1 year
<b>Background:</b>	The protein encoded by this gene is a member of a family of membrane glycoproteins. This glycoprotein provides selectins with carbohydrate ligands. It may also play a role in tumor cell metastasis. [provided by RefSeq, Jul 2008],



Western Blot analysis of L929 cells using CD107a Polyclonal Antibody. Secondary antibody was diluted at 1:20000



Western blot analysis of lysate from L929 cells, using LAMP1 Antibody.