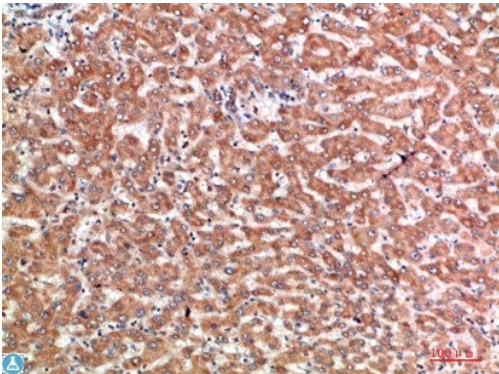
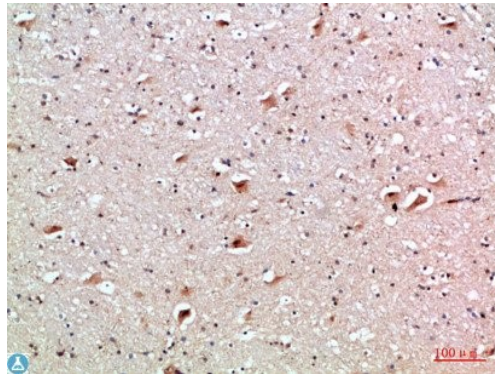


Product name:	CD137
Cat number:	AB-84285
Size:	100 ug
Clone:	POLY
Concentration:	1mg/ml
Host:	Rb
Isotype:	IgG
Immunogen:	Synthetic peptide from human CD137 protein.
Reactivity:	Hu
Applications:	Immunohistochemistry (paraffin-embedded tissues):1:50-300 ELISA 1:5000-20000
Purification:	The antibody was affinity-purified from rabbit serum by affinity chromatography using specific immunogen.
Form:	Liquid
Buffer:	PBS, pH 7.4, containing 0.02% sodium azide as Preservative and 50% Glycerol.
Storage:	Store at -20°C, and avoid repeat freeze-thaw cycles.
Background:	Specificity: The antibody detects endogenous CD137. Tissue Specificity: Expressed on the surface of activated T-cells.



Immunohistochemical analysis of paraffin-embedded human-liver-cancer, antibody was diluted at 1:200.



Immunohistochemical analysis of paraffin-embedded human-brain, antibody was diluted at 1:200.