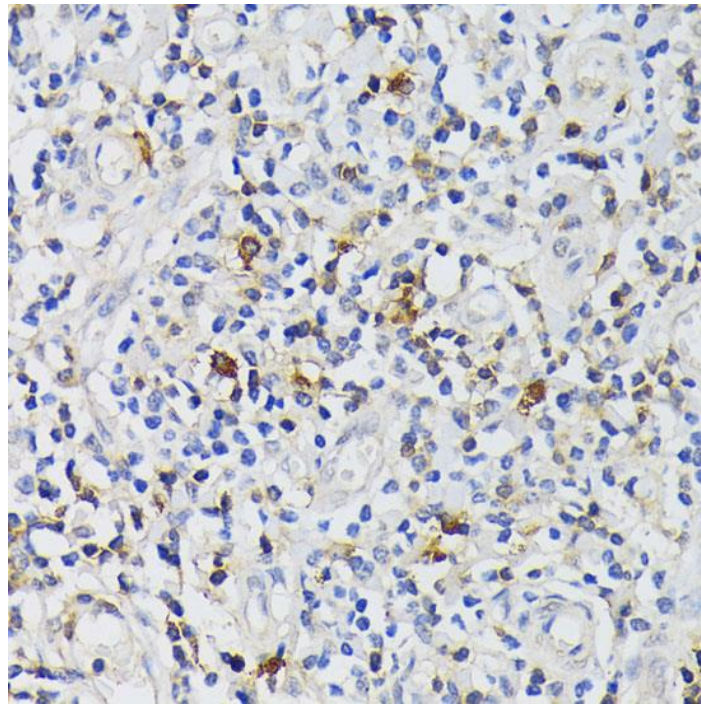
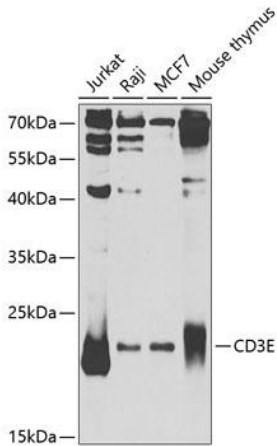


Product name:	CD3 epsilon Rabbit Polyclonal Antibody
Cat number:	AB-81831
Size:	100 ug
Clone:	POLY
Concentration:	1mg/ml
Host:	Rabbit
Isotype:	IgG
Immunogen:	RThe antibody was affinity-purified from rabbit antiserum by affinity-chromatography using epitope-specific immunogen.
Reactivity:	Hu,Ms,Rt
Applications:	Western Blot: 1:500 - 1:2000 Immunohistochemistry: 1:50 - 1:300 Immunoprecipitation: 1:50 - 1:100
Molecular Weight:	21kDa
Purification:	Aff. Pur.
Form:	Liquid
Buffer:	Liquid in PBS containing 50% glycerol, 0.5% BSA and 0.02% sodium azide.
Storage:	Store at -20°C. Avoid freeze / thaw cycles.
Background:	The protein encoded by this gene is the CD3-epsilon polypeptide, which together with CD3-gamma, -delta and -zeta, and the T-cell receptor alpha/beta and gamma/delta heterodimers, forms the T-cell receptor-CD3 complex. This complex plays an important role in coupling antigen recognition to several intracellular signal-transduction pathways. The genes encoding the epsilon, gamma and delta polypeptides are located in the same cluster on chromosome 11. The epsilon polypeptide plays an essential role in T-cell development. Defects in this gene cause immunodeficiency. This gene has also been linked to a susceptibility to type I diabetes in women.



Immunohistochemistry of paraffin embedded human tonsil using CD3E Antigen antibody at dilution of 1:200 (40x lens).