

Product name: CD31/PECAM1 Mouse Monoclonal Antibody

Cat number: MAB-95053

Size: 100 ug

Clone: MEM-11

Concentration: 1 mg/ml

Host: Mouse

Isotype: IgG

Immunogen: Recombinant fusion protein containing a sequence corresponding to amino acids 630-738 of CD31/PECAM1 (

Reactivity: Human, Mouse

Applications: Western Blot 1:1000 - 1:2000 IHC-P 1:200 - 1:800 IF/ICC 1:200 - 1:800 ELISA
Recommended starting concentration is 1 µg/mL.

Molecular Weight: 130 kDa

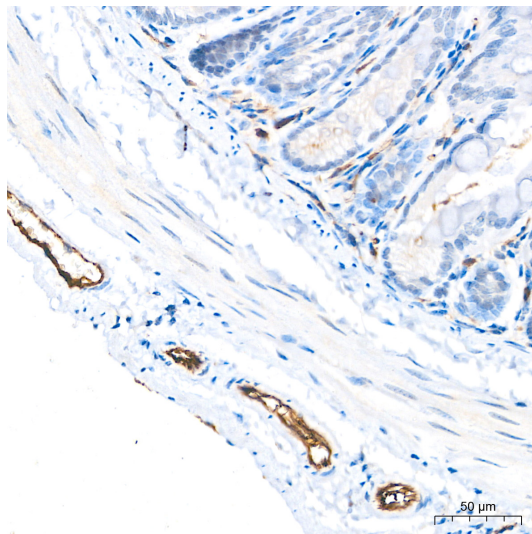
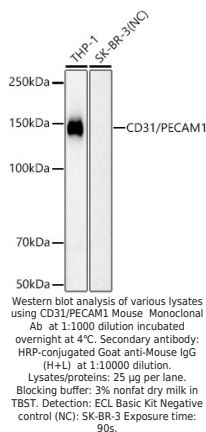
Purification: Affinity Purified

Form: Liquid

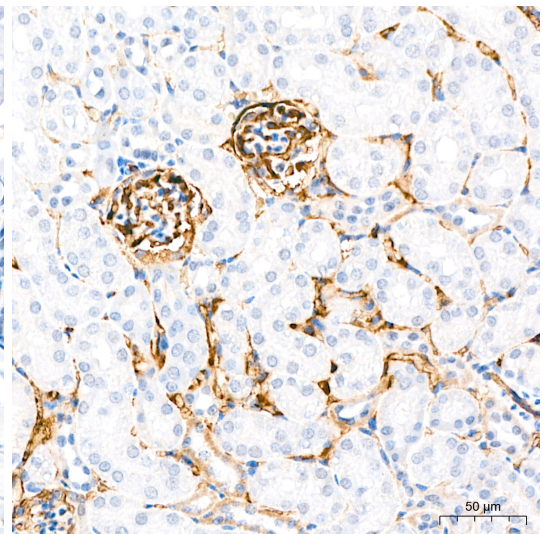
Buffer: PBS with 0.09% Sodium azide,0.05% BSA,50% glycerol,pH7.3.

Storage: Store at -20°C. Avoid freeze / thaw cycles.

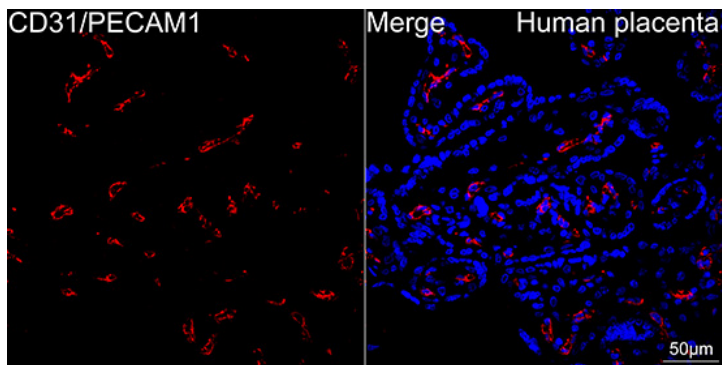
Background: The protein encoded by this gene is found on the surface of platelets, monocytes, neutrophils, and some types of T-cells, and makes up a large portion of endothelial cell intercellular junctions. The encoded protein is a member of the immunoglobulin superfamily and is likely involved in leukocyte migration, angiogenesis, and integrin activation.



Immunohistochemistry analysis of paraffin-embedded Mouse colon tissue using CD31/PECAM1 Mouse Monoclonal Ab at a dilution of 1:200 (40x lens). High pressure antigen retrieval performed with 0.01M Citrate Buffer (pH 6.0) prior to IHC staining.



Immunohistochemistry analysis of paraffin-embedded Mouse kidney tissue using CD31/PECAM1 Mouse Monoclonal Ab at a dilution of 1:200 (40x lens). High pressure antigen retrieval performed with 0.01M Citrate Buffer (pH 6.0) prior to IHC staining.



Confocal imaging of paraffinembedded Human placenta tissue using CD31/PECAM1 Mouse Monoclonal Ab at dilution 1:200 followed by a further incubation with Cy3 Goat Anti-Mouse IgG (H+L) at dilution 1:500 (Red). DAPI was used for nuclear staining (Blue). High pressure antigen retrieval performed with 0.01M Citrate Buffer (pH 6.0)