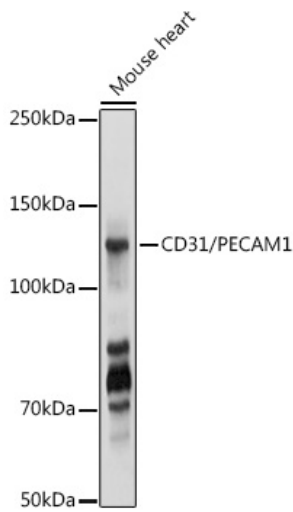
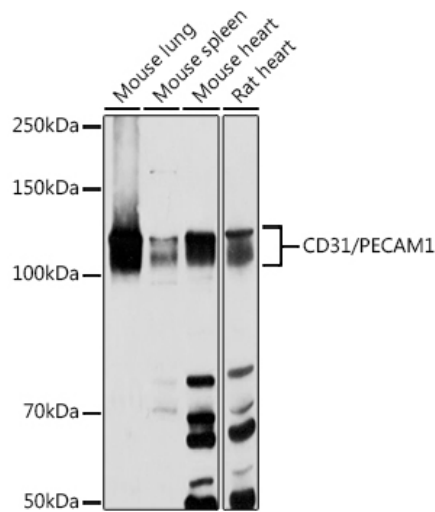


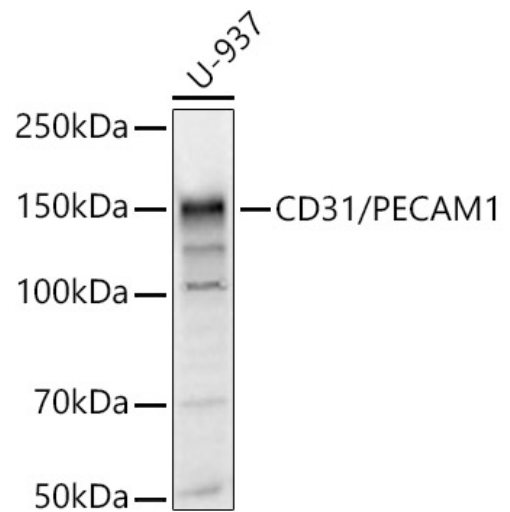
<b>Product name:</b>	CD31/PECAM1 Rabbit Polyclonal Antibody
<b>Cat number:</b>	AB-84818
<b>Size:</b>	100 ug
<b>Concentration:</b>	1 mg/ml
<b>Host:</b>	Rabbit
<b>Isotype:</b>	IgG
<b>Immunogen:</b>	Recombinant fusion protein containing a sequence corresponding to amino acids 630-738 of CD31/PECAM1 (
<b>Reactivity:</b>	Human, Mouse
<b>Applications:</b>	Western Blot 1:500 - 1:1000 IHC-P 1:50 - 1:200 IF/ICC 1:50 - 1:200
<b>Molecular Weight:</b>	140 kDa
<b>Purification:</b>	Affinity Purified
<b>Form:</b>	Liquid
<b>Buffer:</b>	PBS with 0.09% Sodium azide, 50% glycerol, pH7.3.
<b>Storage:</b>	Store at -20°C. Avoid freeze / thaw cycles.
<b>Background:</b>	The protein encoded by this gene is found on the surface of platelets, monocytes, neutrophils, and some types of T-cells, and makes up a large portion of endothelial cell intercellular junctions. The encoded protein is a member of the immunoglobulin superfamily and is likely involved in leukocyte migration, angiogenesis, and integrin activation.



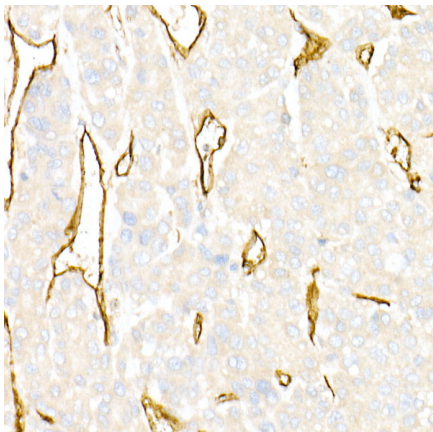
Western blot analysis of lysates from THP-1 cells, using CD31/PECAM1 Rabbit Polyclonal Ab at 1:1000 dilution. Secondary antibody: HRP-conjugated Goat anti-Rabbit IgG (H+L) at 1:10000 dilution. Lysates/proteins: 25µg per lane. Blocking buffer: 3% nonfat dry milk in TBST. Detection: ECL Basic Kit Exposure time: 1s.



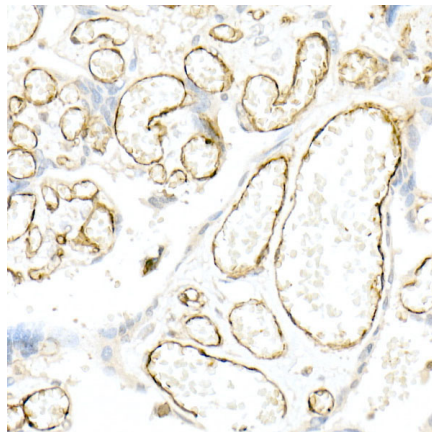
Western blot analysis of various lysates using CD31/PECAM1 Rabbit Polyclonal Ab at 1:1000 dilution. Secondary antibody: HRP-conjugated Goat anti-Rabbit IgG (H+L) at 1:10000 dilution. Lysates/proteins: 25µg per lane. Blocking buffer: 3% nonfat dry milk in TBST. Detection: ECL Basic Kit Exposure time: 10s.



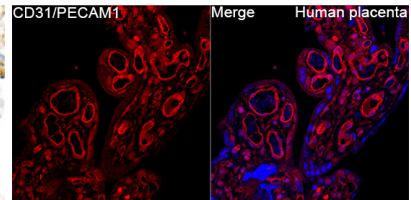
Western blot analysis of lysates from U-937 cells, using CD31/PECAM1 Rabbit Polyclonal Ab at 1:400 dilution. Secondary antibody: HRP-conjugated Goat anti-Rabbit IgG (H+L) at 1:10000 dilution. Lysates/proteins: 25µg per lane. Blocking buffer: 3% nonfat dry milk in TBST. Detection: ECL Basic Kit. Exposure time: 20s.



Immunohistochemistry analysis of paraffin-embedded Human liver cancer using CD31/PECAM1 Rabbit Polyclonal Ab at dilution of 1:50 (40x lens). High pressure antigen retrieval performed with 0.01M Citrate Buffer (pH 6.0) prior to IHC staining.



Immunohistochemistry analysis of paraffin-embedded Human placenta using CD31/PECAM1 Rabbit Polyclonal Ab at dilution of 1:50 (40x lens). High pressure antigen retrieval performed with 0.01M Citrate Buffer (pH 6.0) prior to IHC staining.



Immunofluorescence analysis of Human placenta tissue using CD31/PECAM1 Rabbit Polyclonal Ab at a dilution of 1:100 (40x lens). Secondary antibody: Cy3-conjugated Goat anti-Rabbit IgG (H+L) at 1:500 dilution. Blue: DAPI for nuclear staining. High pressure antigen retrieval performed with 0.01M Citrate Buffer (pH 6.0) prior to IF staining.