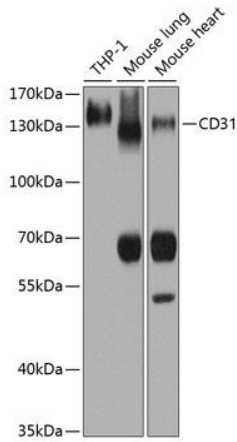
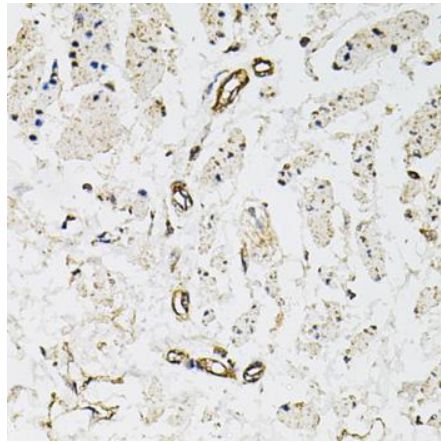


---

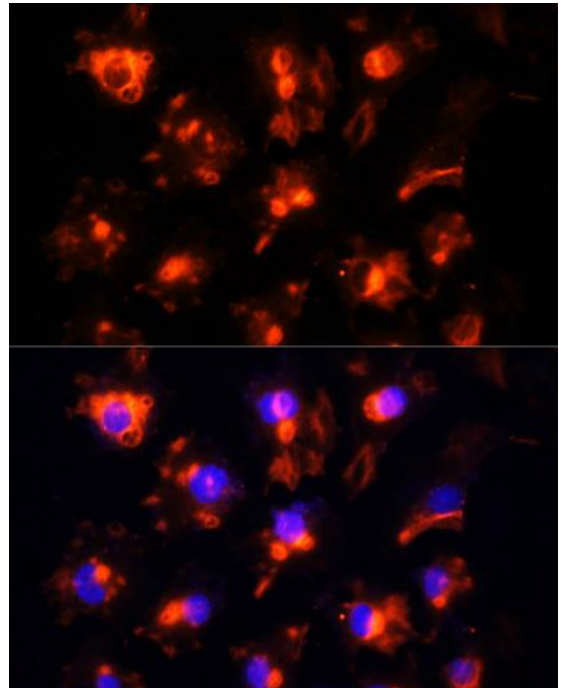
<b>Product name:</b>	CD31 / PECAM1 Rabbit Polyclonal Antibody
<b>Cat number:</b>	AB-83615
<b>Conjugate:</b>	Unconjugated
<b>Size:</b>	100 ug
<b>Clone:</b>	POLY
<b>Concentration:</b>	1mg/ml
<b>Host:</b>	Rabbit
<b>Isotype:</b>	IgG
<b>Immunogen:</b>	A synthetic peptide corresponding to a sequence within amino acids 600 to the C-terminus of mouse CD31
<b>Reactivity:</b>	Hu,Ms,Rt
<b>Applications:</b>	Western Blot: 1:500 - 1:2000 Immunohistochemistry: 1:50 - 1:200 Immunoprecipitation: 1:50 - 1:200 Immunofluorescence: 1:50-1:200
<b>Molecular Weight:</b>	130kDa
<b>Purification:</b>	Aff. Pur.
<b>Form:</b>	Liquid
<b>Buffer:</b>	PBS with 0.02% sodium azide,50% glycerol,pH7.3.
<b>Storage:</b>	Store at -20°C. Avoid freeze / thaw cycles.
<b>Background:</b>	The protein encoded by this gene is found on the surface of platelets, monocytes, neutrophils, and some types of T-cells, and makes up a large portion of endothelial cell intercellular junctions. The encoded protein is a member of the immunoglobulin superfamily and is likely involved in leukocyte migration, angiogenesis, and integrin activation.



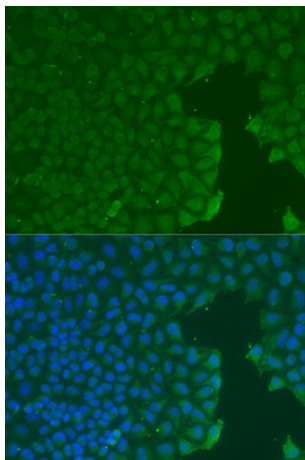
Western blot analysis of extracts of various cell lines, using CD31 antibody at 1:1000 dilution. Secondary antibody: HRP Goat Anti- Rabbit IgG (H+L) at 1:10000 dilution. Lysates/proteins: 25ug per lane. Blocking buffer: 3% nonfat dry milk in TBST. Detection: ECL West Pico Plus. Exposure time: 3s.



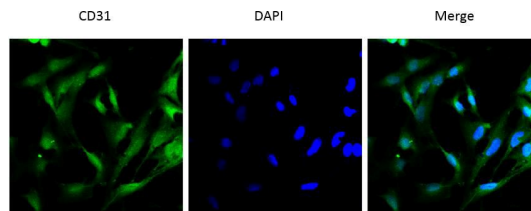
Immunohistochemistry of paraffin embedded human esophagus using CD31 antibody at dilution of 1:100 (40x lens).



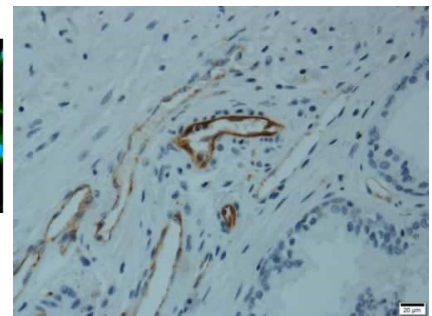
Immunofluorescence analysis of HUVEC cells using CD31 antibody at dilution of 1:100. Blue: DAPI for nuclear staining.



Immunofluorescence analysis of U2OS cells using CD31 antibody at dilution of 1:100. Blue: DAPI for nuclear staining.



Review for CD31 Rabbit Polyclonal Antibody Experiment Type: Immunofluorescence (IF) Sample: Rat lung



Review for CD31 Rabbit Polyclonal Antibody Experiment Type: Immunohistochemistry(IHC) Sample: Human prostate Description: Immunohistochemistry analysis of Human prostate, using PECAM1 Polyclonal Antibody.