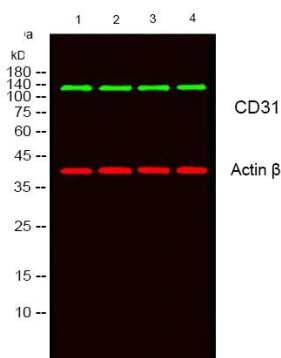
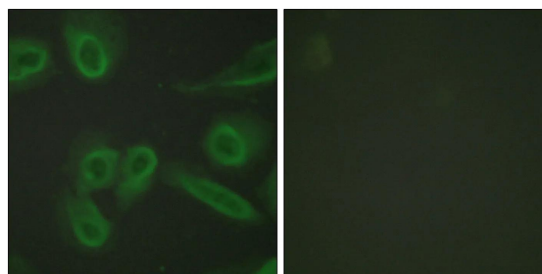


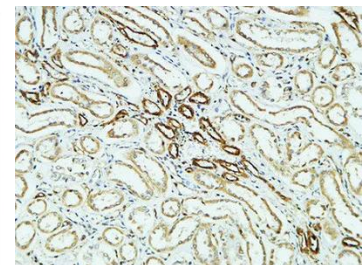
Product name:	CD31 Rabbit Polyclonal Antibody
Cat number:	ABN03853
Conjugate:	Unconjugated
Size:	100µL
Clone:	POLY
Concentration:	1mg/ml
Host:	Rabbit
Isotype:	IgG
Immunogen:	The antiserum was produced against synthesized peptide derived from human PECAM-1. AA range:686-735
Reactivity:	Human,Mouse
Applications:	WB 1:500-1:1000,IHC 1:50-1:100,ICC/IF 1:50-1:200,ELISA 1:5000-1:20000
Molecular Weight:	83 kDa
Purification:	Affinity purification
Form:	liquid
Buffer:	Liquid in PBS containing 50% glycerol, 0.5% protective protein and 0.02% sodium azide, pH 7.3.
Storage:	Store at 4°C short term. Aliquot and store at -20°C long term. Avoid freeze/thaw cycles.
Background:	PECAM-1 a cell adhesion molecule expressed on platelets and at endothelial cell intercellular junctions. Plays a role in modulation of integrin-mediated cell adhesion, transendothelial migration, angiogenesis, apoptosis, cell migration, negative regulation of immune cell signaling, autoimmunity, macrophage phagocytosis, IgE-mediated anaphylaxis and thrombosis. Undergoes alternative splicing, generating multiple isoforms in vascular beds of various tissues.



Western blot analysis of CD31 in HepG2, K562, L929, mouse brain lysates using CD31 antibody.



Immunofluorescence analysis of CD31 in HeLa using CD31 antibody. The picture on the right is blocked using synthesized peptide.



Immunohistochemistry analysis of paraffin-embedded CD31 in paraffin-embedded Human kidney using CD31 antibody. High-pressure and temperature Sodium Citrate pH 6.0 was used for antigen retrieval.